

## RhoA Mouse Monoclonal Antibody(Mix-mA)

|          |          |          |  |
|----------|----------|----------|--|
| Catalog  | TDY1058C | TDY1058F | Tel: 010-80117836                          |
|          |          |          | Web: www.tdybio.com                        |
| Quantity | 50μL     | 100μL    | Entrez-Gene ID:387 , Swiss-Prot Acc.P61586 |

**For research use only.**

| Applications | Species Cross-Reactivity | Molecular Weight | Isotype |
|--------------|--------------------------|------------------|---------|
| IHC          | H, R, M                  | 22KD             | IgG1    |

**Storage Buffer & Condition:** Antigen Affinity Purified IgG in PBS, PBS pH7.4, containing 0.02% **sodium azide** as Preservative and 50% Glycerol.

Store at **-20°C**. **Do not aliquot the antibody.**

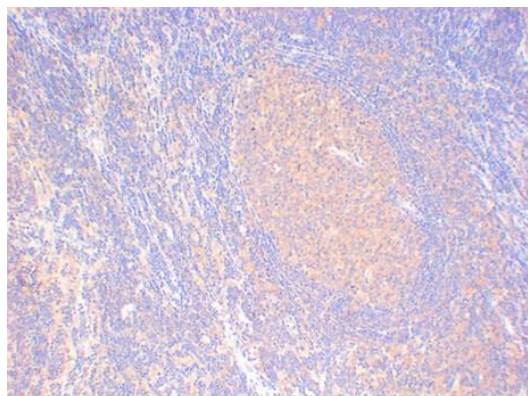
**Recommended dilutions:** IHC: 1:100-200

**Optimal dilutions should be determined by the end user.**

**Specificity:** The Antibody can detects endogenous RhoA proteins.

**Alternative Names:** ARH12,ARHA,RHO12,transforming protein

**Background:** Ras homolog family member A(RHOA) Homo sapiens This gene encodes a member of the Rho family of small GTPases, which cycle between inactive GDP-bound and active GTP-bound states and function as molecular switches in signal transduction cascades. Rho proteins promote reorganization of the actin cytoskeleton and regulate cell shape, attachment, and motility. Overexpression of this gene is associated with tumor cell proliferation and metastasis. Multiple alternatively spliced variants have been identified.



Immunohistochemical analysis of paraffin-embedded Human Lymph Carcinoma Tissue using Rho A (TDY1058) Mouse Monoclonal antibody diluted at 1:200.