

## RhoA Mouse Monoclonal Antibody(4E12)

Catalog TDY1057C TDY1057F

Tel: 010-80117836

Web: www.tdybio.com

Quantity 50μL 100μL

Entrez-Gene ID:387 , Swiss-Prot Acc.P61586

**For research use only.**

Applications	Species Cross-Reactivity	Molecular Weight	Isotype
WB	H, R, M	22KD	IgG1

**Storage Buffer & Condition:** Antigen Affinity Purified IgG in PBS, pH7.4, containing 0.02% **sodium azide** as Preservative and 50% Glycerol.

Store at **-20°C. Do not aliquot the antibody.**

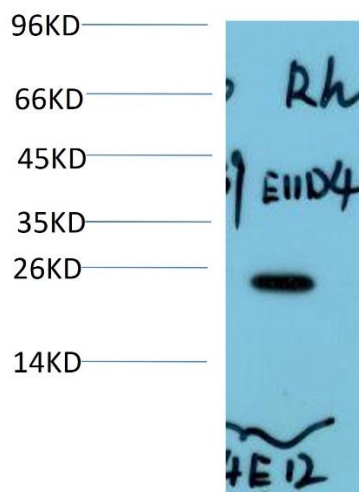
**Recommended dilutions:** WB: 1:1,000-2,000

**Optimal dilutions should be determined by the end user.**

**Specificity:** The Antibody can detects endogenous RhoA proteins.

**Alternative Names:** ARH12,ARHA,RHO12,transforming protein

**Background:** Ras homolog family member A(RHOA) Homo sapiens This gene encodes a member of the Rho family of small GTPases, which cycle between inactive GDP-bound and active GTP-bound states and function as molecular switches in signal transduction cascades. Rho proteins promote reorganization of the actin cytoskeleton and regulate cell shape, attachment, and motility. Overexpression of this gene is associated with tumor cell proliferation and metastasis. Multiple alternatively spliced variants have been identified.



Western blot analysis of HeLa Cell Lysate using RhoA (TDY1057) Mouse

Monoclonal mAb diluted at 1:1,000.