

P38 Mouse Monoclonal Antibody(4G2)

Catalog	TDY1056C	TDY1056F	Tel: 010-80117836
			Web: www.tdybio.com
Quantity	50μL	100μL	Entrez-Gene ID:1432 , Swiss-Prot Acc.Q16539

For research use only.

Applications	Species Cross-Reactivity	Molecular Weight	Isotype
WB	H,R,M	~40KD	IgG1

Storage Buffer & Condition: PBS, pH 7.4, containing 0.02% **sodium azide** as Preservative and 50% Glycerol.
Store at **-20°C. Do not aliquot the antibody.**

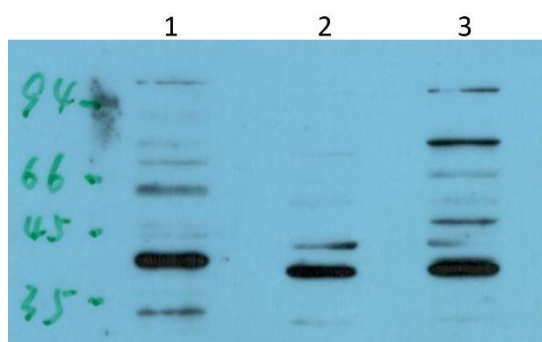
Recommended dilutions:WB: 1:1,000-2,000

Optimal dilutions should be determined by the end user.

Specificity:The Antibody can detect endogenous p38 proteins.

Alternative Names:MAP kinase p38 alpha, p38 MAP kinase, CSBP , RK, MAPK 14 antibody

Background:p38 MAP kinase (MAPK) is the mammalian orthologue of the yeast HOG kinase that participates in a signaling cascade controlling cellular responses to cytokines and stress. Isoforms p38α, β, γ and δ have been identified. p38 MAPK is activated by a variety of cellular stresses including osmotic shock, inflammatory cytokines, lipopolysaccharide (LPS), UV light, and growth factors.



Western blot analysis of 1) HeLa Cell, 2) Mouse Liver Tissue, 3) Rat Kidney Tissue Lysate using P38 (TDY1056) Mouse Monoclonal mAb diluted at 1:2,000.