

## Src Mouse Monoclonal Antibody(Mix-mA)

Catalog TDY1038C TDY1038F

Tel: 010-80117836

Web: www.tdybio.com

Quantity 50μL 100μL

Entrez-Gene ID#6714 , Swiss-Prot Acc.#P12931

**For research use only.**

Applications	Species Cross-Reactivity	Molecular Weight	Isotype
WB,IHC	H,M,R	~60KD	IgG1

**Storage Buffer & Condition:** PBS, pH 7.4, containing 0.02% **sodium azide** as Preservative and 50% Glycerol.

Store at **-20°C. Do not aliquot the antibody.**

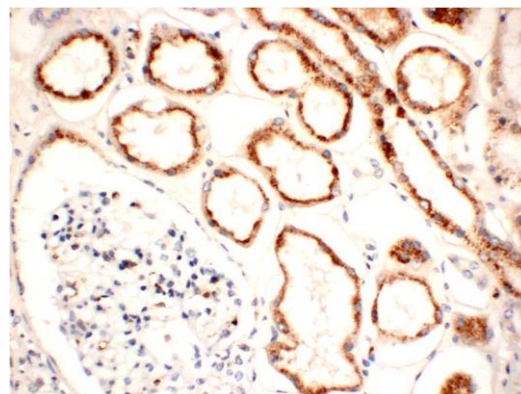
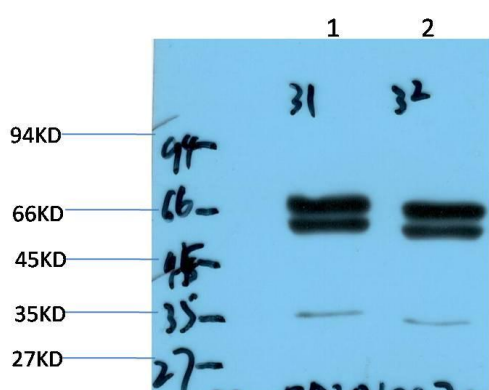
**Recommended dilutions:** WB: 1:1,000-2,000 IHC 1:100-200

**Optimal dilutions should be determined by the end user.**

**Specificity:** Antibody can detect endogenous Src proteins.

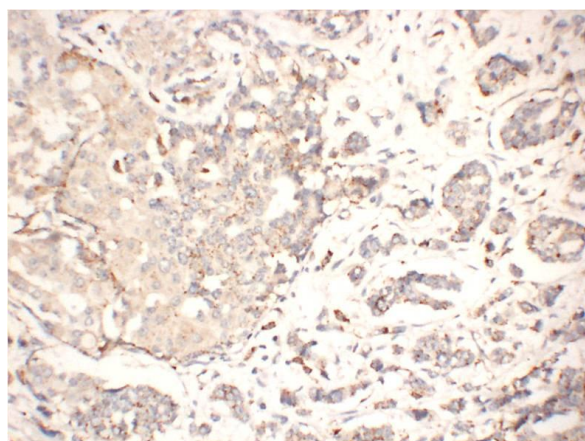
**Alternative Names:** Src oncogene, protooncogene src, pp60 src, tyrosine kinase pp60c src

**Background:** SRC proto-oncogene, non-receptor tyrosine kinase (SRC) Homo sapiens This gene is highly similar to the v-src gene of Rous sarcoma virus. This proto-oncogene may play a role in the regulation of embryonic development and cell growth. The protein encoded by this gene is a tyrosine-protein kinase whose activity can be inhibited by phosphorylation by c-SRC kinase. Mutations in this gene could be involved in the malignant progression of colon cancer.



Western blot analysis of 1) Hela Cell, 2) 293T Cell Lysate using Src (TDY1038) Mouse Monoclonal mAb diluted at 1:2,000.

Immunohistochemical analysis of paraffin-embedded Human Kidney Tissue using Src (TDY1038) Mouse Monoclonal antibody diluted at 1:200.



Immunohistochemical analysis of paraffin-embedded Human Breast Carcinoma Tissue using Src (TDY1038) Mouse Monoclonal antibody diluted at 1:200.