

ATG13 Rabbit Polyclonal Antibody

Catalog TDY1026C TDY1026F

Tel: 010-80117836

Web: www.tdybio.com

Quantity 50μL 100μL

Entrez-Gene ID:9776 , Swiss-Prot Acc.:O75143

For research use only.

Applications	Species Cross-Reactivity	Molecular Weight	Isotype
WB	H, R, M	~72	IgG

Storage Buffer & Condition: Antigen Affinity Purified IgG in PBS, pH 7.4, containing 0.02% **sodium azide** as Preservative and 50% Glycerol. Store at **-20°C. Do not aliquot the antibody.**

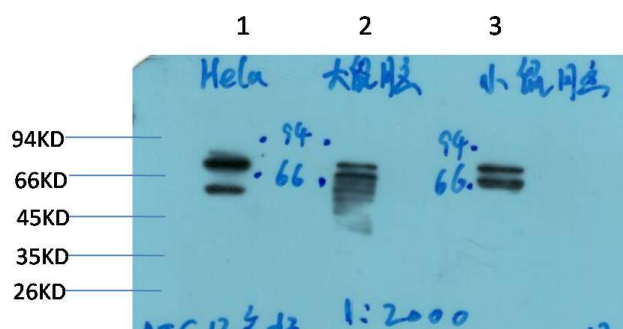
Recommended dilutions:WB: 1:1,000-2,000

Optimal dilutions should be determined by the end user.

Specificity:The Antibody can detect endogenous ATG13 proteins.

Alternative Names:KIAA0652, Apg13, Autophagy-related protein 13 antibody

Background:Atg13 was identified as a constitutively expressed protein that was genetically linked to Atg1/Apg1, a protein kinase required for autophagy. Overexpression of Atg1 suppresses the defects in autophagy observed in Atg13 mutants. Autophagy requires a direct association between Atg1 and Atg13, and is inhibited by TOR-dependent phosphorylation of Atg13 under high-nutrient conditions.



Western blot analysis of 1)HeLa Cell, 2) Rat Brain Tissue, 3) Mouse Brain

Tissue Lysate using (TDY1026) Rabbit pAb diluted at 1:2,000.