

Peripheralin Rabbit Polyclonal Antibody(3H1)

Catalog	TDY1022C	TDY1022F	Tel: 010-80117836
			Web: www.tdybio.com
Quantity	50μL	100μL	Entrez-Gene ID#5630 , Swiss-Prot Acc.#P41219

For research use only.

Applications	Species Cross-Reactivity	Molecular Weight	Isotype
WB	H,M,R	~55KD	IgG

Storage Buffer & Condition: PBS, pH 7.4, containing 0.02% **sodium azide** as Preservative and 50% Glycerol.
Store at **-20°C. Do not aliquot the antibody.**

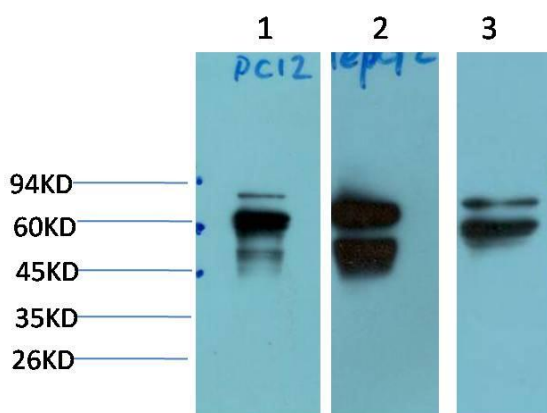
Recommended dilutions:WB: 1:1,000-2,000

Optimal dilutions should be determined by the end user.

Specificity:Antibody can detects recombinant Peripheralin proteins.

Alternative Names:PRPH, NEF4, PRPH1,Neurofilament 4

Background: Peripheralin(PRPH) Homo sapiens This gene encodes a cytoskeletal protein found in neurons of the peripheral nervous system. The encoded protein is a type III intermediate filament protein with homology to other cytoskeletal proteins such as desmin, and is a different protein that the peripherin found in photoreceptors. Mutations in this gene have been associated with susceptibility to amyotrophic lateral sclerosis.



Western blot analysis of 1)PC12 Cell, 2) HepG2 Cell, 3) Mouse Liver Tissue

Lysate using (TDY1022) Rabbit pAb diluted at 1:2,000.