

ACE2 Rabbit Polyclonal Antibody

Catalog	TDY1009C	TDY1009F	Tel: 010-80117836
			Web: www.tdybio.com
Quantity	50μL	100μL	Entrez-Gene ID:859272 , Swiss-Prot Acc.Q9BYF1

For research use only.

Applications	Species Cross-Reactivity	Molecular Weight	Isotype
WB	H(M, R)	120-135KD	IgG

Storage Buffer & Condition: Antigen Affinity Purified IgG in PBS, pH 7.4, containing 0.02% **sodium azide** as Preservative and 50% Glycerol.

Store at **-20°C. Do not aliquot the antibody.**

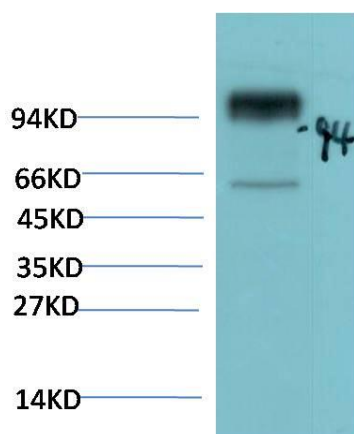
Recommended dilutions: WB: 1:2,000-5,000

Optimal dilutions should be determined by the end user.

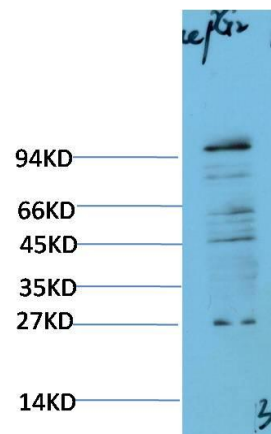
Specificity: Antibody can detect endogenous Human ACE2 protein, predict Cross-Reactivity with Mouse, Rat.

Alternative Names: ACE related carboxypeptidase, ACEH, Angiotensin converting enzyme 2, EC 3.4.17, DKFZP433A014

Background: angiotensin I converting enzyme 2(ACE2) Homo sapiens The protein encoded by this gene belongs to the angiotensin-converting enzyme family of dipeptidyl carboxydipeptidases and has considerable homology to human angiotensin 1 converting enzyme. This secreted protein catalyzes the cleavage of angiotensin I into angiotensin 1-9, and angiotensin II into the vasodilator angiotensin 1-7. The organ- and cell-specific expression of this gene suggests that it may play a role in the regulation of cardiovascular and renal function, as well as fertility. In addition, the encoded protein is a functional receptor for the spike glycoprotein of the human coronaviruses SARS and HCoV-NL63.



Western blot analysis of 293T transfected ACE2 cell Lysate using (TDY1009)
Rabbit pAb diluted at 1:5,000.



Western blot analysis of HepG2 cell Lysate using (TDY1009)
Rabbit pAb diluted at 1:2,000.