

## ILK1 Rabbit Polyclonal Antibody

Catalog TDY785C TDY785F

Tel: 010-82908854

Web: www.tdybio.com

Quantity 50μL 100μL

Entrez-Gene ID:3611, Swiss-Prot Acc. Q13418

**For research use only.**

Applications	Species Cross-Reactivity	Molecular Weight	Isotype
WB, IHC	H, R, M	~51KD	IgG

**Storage Buffer & Condition:** Antigen Affinity Purified IgG in PBS, pH 7.4, containing 0.02% **sodium azide** as Preservative and 50% Glycerol.

Store at **-20°C. Do not aliquot the antibody.**

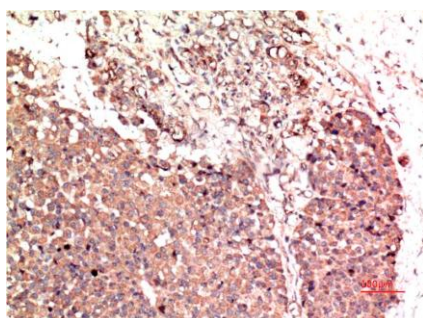
**Recommended dilutions:** WB: 1:500-1,000 IHC: 1:50-100

**Optimal dilutions should be determined by the end user.**

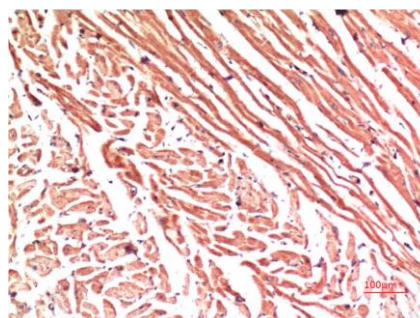
**Specificity:** The Antibody can detects endogenous ILK1 proteins.

**Alternative Names:** ILK, Integrin-Linked protein kinase, P59ILK

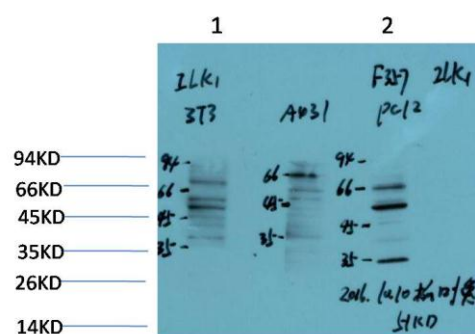
**Background:** Integrin linked kinase(ILK) Homo sapiens This gene encodes a protein with a kinase-like domain and four ankyrin-like repeats. The encoded protein associates at the cell membrane with the cytoplasmic domain of beta integrins, where it regulates integrin-mediated signal transduction. Activity of this protein is important in the epithelial to mesenchymal transition, and over-expression of this gene is implicated in tumor growth and metastasis. Alternative splicing results in multiple transcript variants.



Immunohistochemical analysis of paraffin-embedded Human Breast Carcinoma Tissue using ILK1 (TDY785) Rabbit polyclonal antibody diluted at 1:200.



Immunohistochemical analysis of paraffin-embedded Human Heart Tissue using ILK1 (TDY785) Rabbit polyclonal antibody diluted at 1:200.



Western blot analysis of 1) 3T3 Cell Lysate, 2) PC12 Cell Lysate using ILK1 (TDY785) Rabbit pAb diluted at 1:1000.

**Applications:** WB-Western blot IHC-Immunochemistry IF-Immunofluorescence IP-Immunoprecipitation ChIP-Chormatin Immunoprecipitation  
**Reactivity:** H-Human R-Rat M-Mouse Mk-Monkey Dg-Dog Ch-Chicken Hm-Hamster Rb-Rabbit Sh-Sheep Pg-Pig Z-Zebrafish