

Kininogen 1 Rabbit Polyclonal Antibody(KNG1)

Catalog	TDY780C	TDY780F	Tel: 010-80117836
			Web: www.tdybio.com
Quantity	50μL	100μL	Entrez-Gene ID:5295 , Swiss-Prot Acc.P27986

For research use only.

Applications	Species Cross-Reactivity	Molecular Weight	Isotype
WB,IHC	H,R,M	45~120KD	IgG

Storage Buffer & Condition: Antigen Affinity Purified IgG in PBS, pH 7.4, containing 0.02% **sodium azide** as Preservative and 50% Glycerol.

Store at **-20°C. Do not aliquot the antibody.**

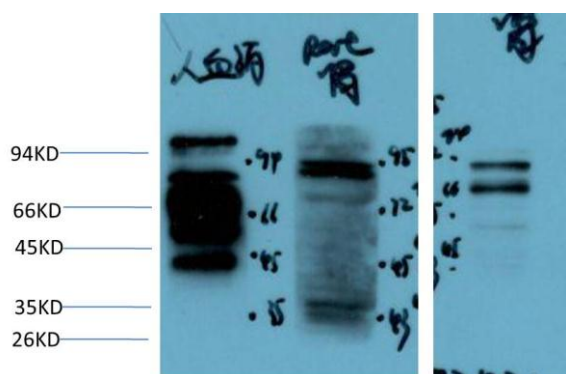
Recommended dilutions:WB:1:500-1,000 IHC:1:100-200

Optimal dilutions should be determined by the end user.

Specificity: Antibody can detects endogenous KNG1 protein.

Alternative Names: BDK,BK,KNG, Kallidin antibody.

Background: Kininogens are inhibitors of thiol proteases; HMW-kininogen plays an important role in blood coagulation by helping to position optimally prekallikrein and factor XI next to factor XII; HMW-kininogen inhibits the thrombin- and plasmin-induced aggregation of thrombocytes; the active peptide bradykinin that is released from HMW-kininogen shows a variety of physiological effects. LMW-kininogen inhibits the aggregation of thrombocytes; LMW-kininogen is in contrast to HMW-kininogen not involved in blood clotting.



Western blot analysis of 1) Human Serum, 2) Rat Kidney Tissue Lysate, 3) Mouse Tissue Lysate using (TDY780) Rabbit pAb diluted at 1:1000.