

## Calreticulin Rabbit Polyclonal Antibody

Catalog TDY779C TDY779F

Tel: 010-80117836

Web: [www.tdybio.com](http://www.tdybio.com)

Quantity 50μL 100μL

Entrez-Gene ID:5295 , Swiss-Prot Acc.P27986

**For research use only.**

Applications	Species Cross-Reactivity	Molecular Weight	Isotype
WB	H,R,M	~55KD	IgG

**Storage Buffer & Condition:** Antigen Affinity Purified IgG in PBS, pH 7.4, containing 0.02% **sodium azide** as Preservative and 50% Glycerol.

Store at **-20°C. Do not aliquot the antibody.**

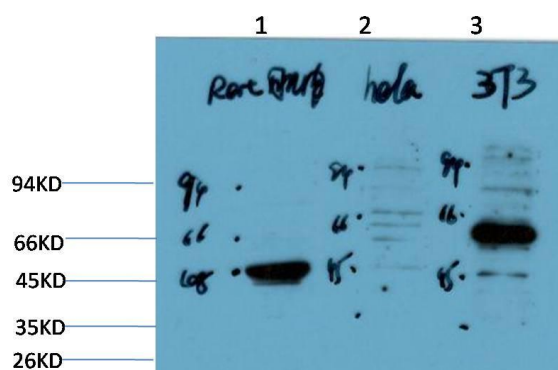
**Recommended dilutions:**WB:1:500-1,000

**Optimal dilutions should be determined by the end user.**

**Specificity:** Antibody can detects endogenous Calreticulin protein.

**Alternative Names:** CALR,CRT,CRTC,SSA antibody

**Background:** Calcium is a universal signaling molecule involved in many cellular functions such as cell motility, metabolism, protein modification, protein folding, and apoptosis. Calcium is stored in the endoplasmic reticulum (ER), where it is buffered by calcium binding chaperones such as calnexin and calreticulin, and is released via the IP<sub>3</sub> Receptor channel . Calreticulin also functions as an ER chaperone that ensures proper folding and quality control of newly synthesized glycoproteins. As such, calreticulin presumably does not alter protein folding but regulates proper timing for efficient folding and subunit assembly. Furthermore, calreticulin retains proteins in non-native conformation within the ER and targets them for degradation .



Western blot analysis of 1) Rat Skeletal Muscle Tissue Lysate, 2) HeLa Cell Lysate ,  
3) 3T3 Cell Lysate using Calreticulin (TDY779) Rabbit pAb diluted at 1:1000.