

## Bcl-2 Mouse Monoclonal Antibody(2F1)

Catalog TDY765C TDY765F

Tel: 010-82908854

Free: 400-0620-621

Quantity 50μL 100μL

Web: www.tdybio.com

**For research use only.**

Applications	Species Cross-Reactivity	Molecular Weight	Isotype
WB,IHC	H, R, M	26KD	IgG1

**Storage Buffer & Condition:** PBS, pH 7.4, containing 0.02% **sodium azide** as Preservative and 50% Glycerol.

Store at **-20°C. Do not aliquot the antibody.**

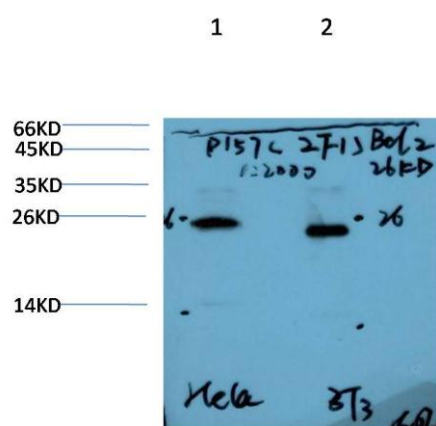
**Recommended dilutions:** WB: 1:1,000~2,000 IHC: 1:100~200

**Optimal dilutions should be determined by the end user.**

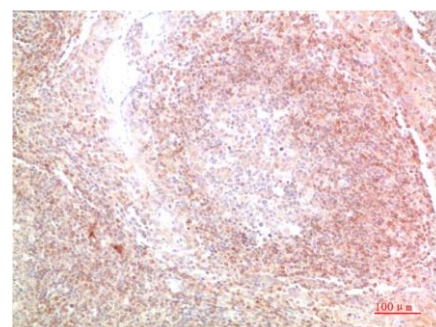
**Specificity:** Bcl-2 antibody detects endogenous Bcl-2 proteins.

**Alternative Names:** Bcl2, Apoptosis regulator Bcl 2 antibody, B cell CLL/lymphoma 2 antibody

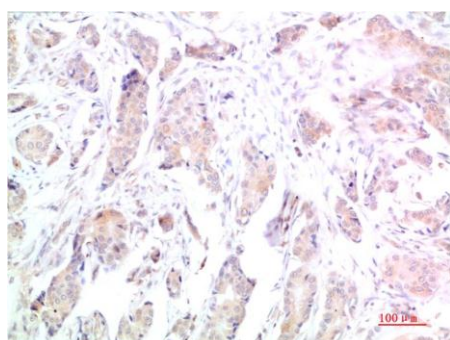
**Background:** BCL2 is an integral outer mitochondrial membrane protein that blocks the apoptotic death of some cells such as lymphocytes. Constitutive expression of BCL2, such as in the case of translocation of BCL2 to Ig heavy chain locus, is thought to be the cause of follicular lymphoma. BCL2 suppresses apoptosis in a variety of cell systems including factor-dependent lymphohematopoietic and neural cells. It regulates cell death by controlling the mitochondrial membrane permeability.



Western blot analysis of 1) HeLa Cell Lysate, 2) 3T3 Cell Lysate using BCL-2 (TDY765) Mouse mAb diluted at 1:2000



Immunohistochemical analysis of paraffin-embedded Human Tonsil Tissue using BCL-2 (TDY765) Mouse mAb diluted at 1:200.



Immunohistochemical analysis of paraffin-embedded Human Breast Carcinoma

**Applications:** WB-Western blot IHC-Immunochemistry IF-Immunofluorescence IP-Immunoprecipitation ChIP-Chormatin Immunoprecipitation  
**Reactivity:** H-Human R-Rat M-Mouse Mk-Monkey Dg-Dog Ch-Chicken Hm-Hamster Rb-Rabbit Sh-Sheep Pg-Pig



*Tissue using BCL-2 (TDY765) Mouse mAb diluted at 1:200.*