

## HP-1 $\alpha$ Mouse Monoclonal Antibody(5E3)

Catalog TDY712C TDY712F

Tel: 010-80117836

Web: [www.tdybio.com](http://www.tdybio.com)

Quantity 50 $\mu$ L 100 $\mu$ L

Entrez-Gene ID:23468 , Swiss-Prot Acc.P45973

**For research use only.**

Applications	Species Cross-Reactivity	Molecular Weight	Isotype
WB,IHC	H,R,M	~22KD	IgG1

**Storage Buffer & Condition:** PBS, pH 7.4, containing 0.02% **sodium azide** as Preservative and 50% Glycerol.

Store at **-20°C. Do not aliquot the antibody.**

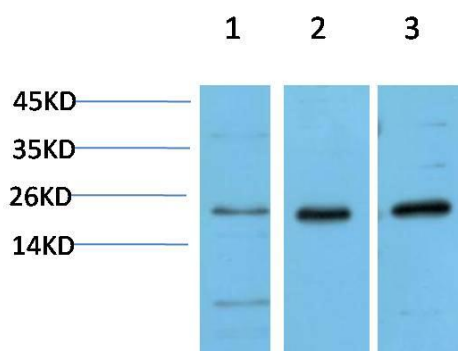
**Recommended dilutions:** WB: 1:500-1,000 IHC: 1:100-200

**Optimal dilutions should be determined by the end user.**

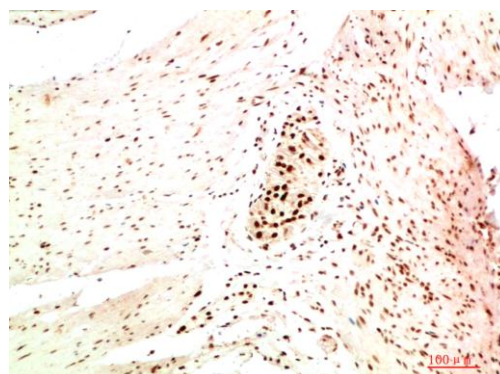
**Specificity:** Antibody can detects endogenous HP-1  $\alpha$  proteins.

**Alternative Names:** Antigen p25, CBX5, HEL25, Heterochromatin protein 1

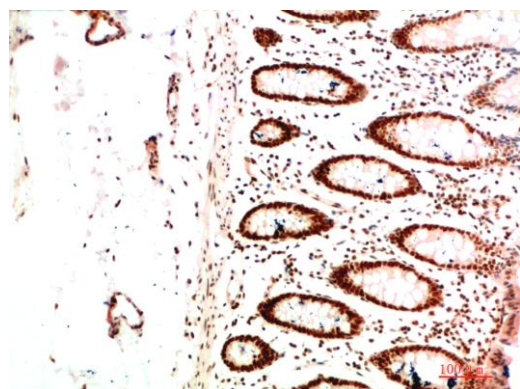
**Background:** Heterochromatin protein 1 (HP1) is a family of heterochromatic adaptor molecules involved in both gene silencing and higher order chromatin structure. All three HP1 family members ( $\alpha$ ,  $\beta$ , and  $\gamma$ ) are primarily associated with centromeric heterochromatin.



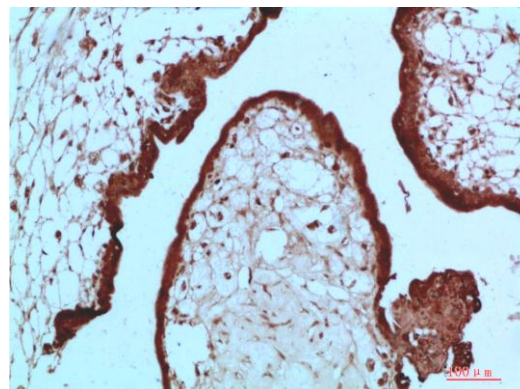
Western blot analysis of 1) Hela Cell Lysate, 2) 3T3 Cell Lysate, 3) PC12 Cell Lysate using HP-1 $\alpha$  (TDY712) Mouse mAb diluted at 1:1000.



Immunohistochemical analysis of paraffin-embedded Human Colon Carcinoma Tissue using HP-1  $\alpha$  (TDY712) Mouse mAb diluted at 1:200



Immunohistochemical analysis of paraffin-embedded Human Colon Carcinoma Tissue using HP-1  $\alpha$  (TDY712) Mouse mAb diluted at 1:200



Immunohistochemical analysis of paraffin-embedded Human Placenta Tissue using HP-1  $\alpha$  (TDY712) Mouse mAb diluted at 1:200

**Applications:** WB-Western blot IHC-Immunochemistry IF-Immunofluorescence IP-Immunoprecipitation ChIP-Chormatin Immunoprecipitation  
**Reactivity:** H-Human R-Rat M-Mouse Mk-Monkey Dg-Dog Ch-Chicken Hm-Hamster Rb-Rabbit Sh-Sheep Pg-Pig Z-Zebrafish