

HP-1 γ Mouse Monoclonal Antibody(3B9)

Catalog TDY710 TDY710

Tel: 010-80117836

Web: www.tdybio.com

Quantity 50 μ L 100 μ L

Entrez-Gene ID:11335 , Swiss-Prot Acc.Q13185

For research use only.

Applications	Species Cross-Reactivity	Molecular Weight	Isotype
WB,IHC	H,R,M	~24KD	IgG1

Storage Buffer & Condition: PBS, pH 7.4, containing 0.02% **sodium azide** as Preservative and 50% Glycerol.

Store at **-20°C**. **Do not aliquot the antibody.**

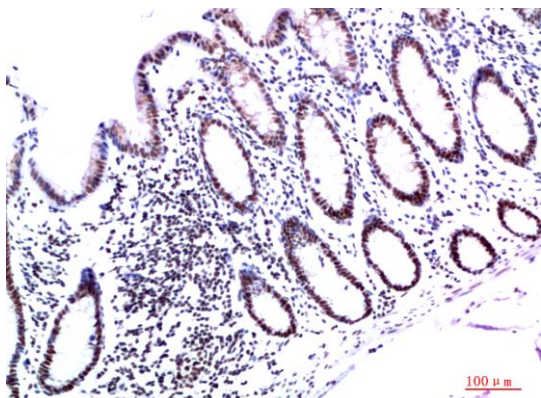
Recommended dilutions: WB: 1:1,000-2,000 IHC: 1:100-200

Optimal dilutions should be determined by the end user.

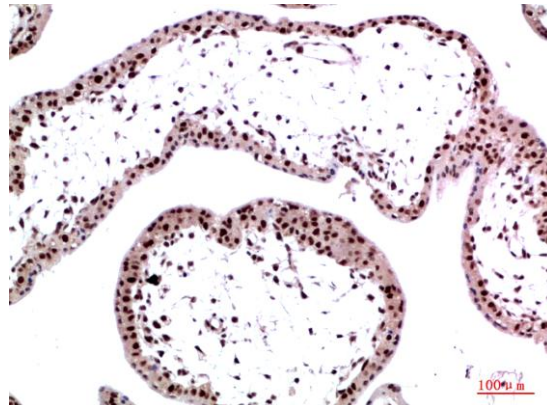
Specificity: The Antibody can detects endogenous HP-1 γ proteins.

Alternative Names: CBX3, Chromobox homolog 3, HECH, HP1 gamma

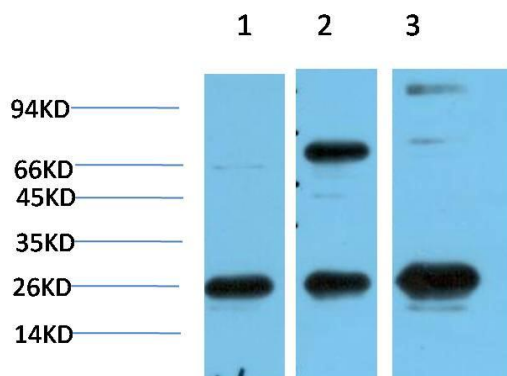
Background: Heterochromatin protein 1 (HP1) is a family of heterochromatic adaptor molecules involved in both gene silencing and higher order chromatin structure. All three HP1 family members (α , β , and γ) are primarily associated with centromeric heterochromatin.



Immunohistochemical analysis of paraffin-embedded Human Colon Carcinoma Tissue using HP-1 γ (TDY710) Mouse mAb diluted at 1:200



Immunohistochemical analysis of paraffin-embedded Human Placenta Tissue using HP-1 γ (TDY710) Mouse mAb diluted at 1:200



Western blot analysis of 1) HeLa Cell Lysate, 2) 3T3 Cell Lysate, 3) PC12 Cell Lysate using HP-1 γ (TDY710) Mouse mAb diluted at 1:1000.

Applications: WB-Western blot IHC-Immunochemistry IF-Immunofluorescence IP-Immunoprecipitation ChIP-Chromatin Immunoprecipitation
Reactivity: H-Human R-Rat M-Mouse Mk-Monkey Dg-Dog Ch-Chicken Hm-Hamster Rb-Rabbit Sh-Sheep Pg-Pig Z-Zebrafish