

HSP40 Rabbit Polyclonal Antibody(F158)

Catalog TDY684C TDY684F

Tel: 010-82908854

Web: www.tdybio.com

Quantity 50μL 100μL

Entrez-Gene ID:3337 , Swiss-Prot Acc.P25685

For research use only.

Applications	Species Cross-Reactivity	Molecular Weight	Isotype
WB, IHC	H, R, M	40KD	IgG

Storage Buffer & Condition: Antigen Affinity Purified IgG in PBS, pH 7.4, containing 0.02% **sodium azide** as Preservative and 50% Glycerol.

Store at **-20°C. Do not aliquot the antibody.**

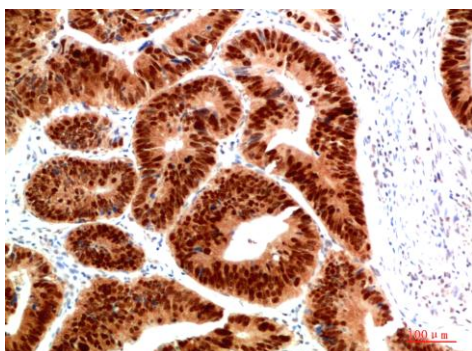
Recommended dilutions: WB: 1:500-1,000 IHC: 1:100-200

Optimal dilutions should be determined by the end user.

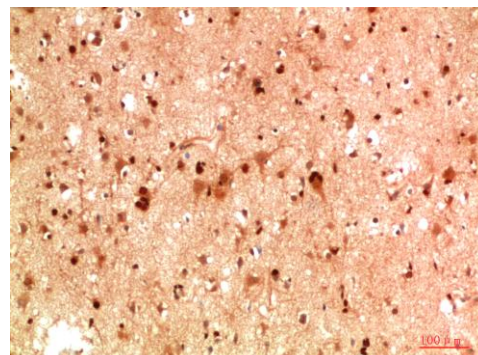
Specificity: The Antibody can detects endogenous HSP40 proteins.

Alternative Names: DNA J B1, HDJ1, HSPF1

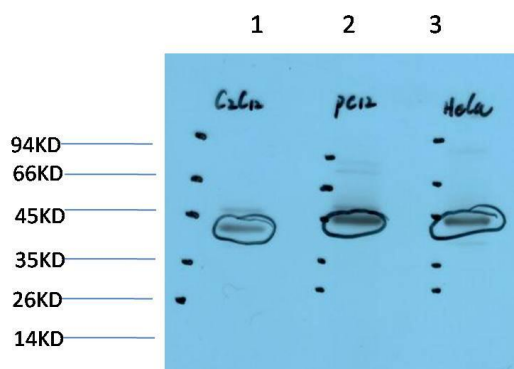
Background: HSP40 and HSP40-like proteins represent a large family of chaperone proteins that are homologous to *E. coli* DnaJ protein. HSP40 family proteins bind unfolded proteins, prevent their aggregation, and then deliver them to HSP70. Another major function of HSP40 is to stimulate ATPase activity of HSP70, which causes conformational change of the unfolded proteins.



Immunohistochemical analysis of paraffin-embedded Human Colon Carcinoma Tissue using HSP40 (TDY684) Rabbit pAb diluted at 1:200



Immunohistochemical analysis of paraffin-embedded Human Brain Tissue using HSP40 (TDY684) Rabbit pAb diluted at 1:200



Western blot analysis of 1) C2C12 Cell Lysate, 2) PC12 Cell Lysate, 3) HeLa Cell Lysate using HSP40 (TDY684) Rabbit pAb diluted at 1:1000.

Applications: WB-Western blot IHC-Immunohistochemistry IF-Immunofluorescence IP-Immunoprecipitation ChIP-Chromatin Immunoprecipitation
Reactivity: H-Human R-Rat M-Mouse Mk-Monkey Dg-Dog Ch-Chicken Hm-Hamster Rb-Rabbit Sh-Sheep Pg-Pig Z-Zebrafish