

ATM Rabbit Polyclonal Antibody(ATM-2)

Catalog TDY653C TDY653F

Tel: 010-80117836

Web: www.tdybio.com

Quantity 50 μ L 100 μ L

Entrez-Gene ID:472, Swiss-Prot Acc.Q13315

For research use only.

Applications	Species Cross-Reactivity	Molecular Weight	Isotype
IHC	H,R,M	~280KD	IgG

Storage Buffer & Condition: Antigen Affinity Purified IgG in PBS, pH 7.4, containing 0.02% **sodium azide** as Preservative and 50% Glycerol.

Store at **-20°C. Do not aliquot the antibody.**

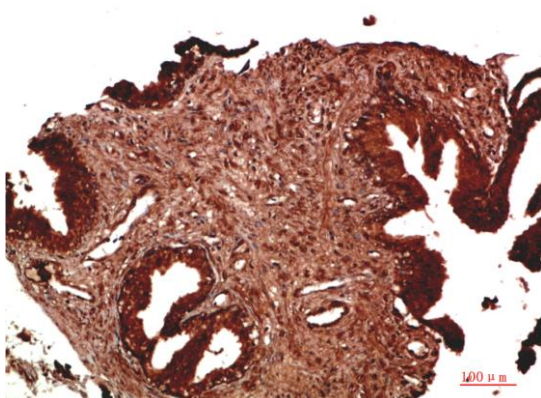
Recommended dilutions: IHC: 1:100-200

Optimal dilutions should be determined by the end user.

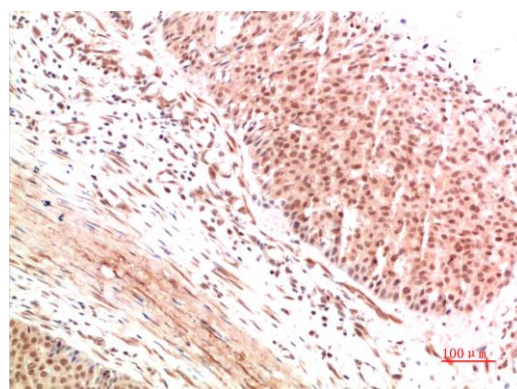
Specificity: The antibody can detects endogenous ATM proteins.

Alternative Names: AT1,ATA,ATDC,TEL1,A-T mutated antibody

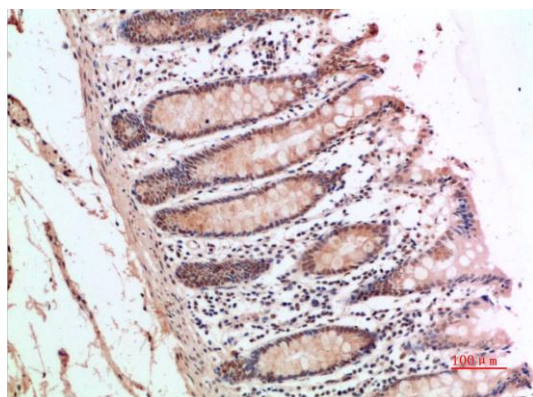
Background: Ataxia telangiectasia mutated kinase (ATM) is a serine/threonine kinase that regulates cell cycle checkpoints and DNA repair. ATM kinase regulates a number of proteins involved in cell cycle checkpoint control, apoptosis, and DNA repair.



Immunohistochemical analysis of paraffin-embedded Human Prostate Carcinoma Tissue using ATM (TDY653) Rabbit pAb diluted at 1:200.



Immunohistochemical analysis of paraffin-embedded Human Breast Carcinoma Tissue using ATM (TDY653) Rabbit pAb diluted at 1:200.



Immunohistochemical analysis of paraffin-embedded Human Colon Carcinoma Tissue using ATM (TDY653) Rabbit pAb diluted at 1:200.

Applications: WB-Western blot IHC-Immunochemistry IF-Immunofluorescence IP-Immunoprecipitation ChIP-Chormatin Immunoprecipitation
Reactivity: H-Human R-Rat M-Mouse Mk-Monkey Dg-Dog Ch-Chicken Hm-Hamster Rb-Rabbit Sh-Sheep Pg-Pig Z-Zebrafish