

ATM Rabbit Polyclonal Antibody(ATM-1)

Catalog TDY652C TDY652F

Tel: 010-80117836

Web: www.tdybio.com

Quantity 50μL 100μL

Entrez-Gene ID:472, Swiss-Prot Acc.Q13315

For research use only.

Applications	Species Cross-Reactivity	Molecular Weight	Isotype
IHC	H,R,M	~350KD	IgG

Storage Buffer & Condition: Antigen Affinity Purified IgG in PBS, pH 7.4, containing 0.02% **sodium azide** as Preservative and 50% Glycerol.

Store at **-20°C. Do not aliquot the antibody.**

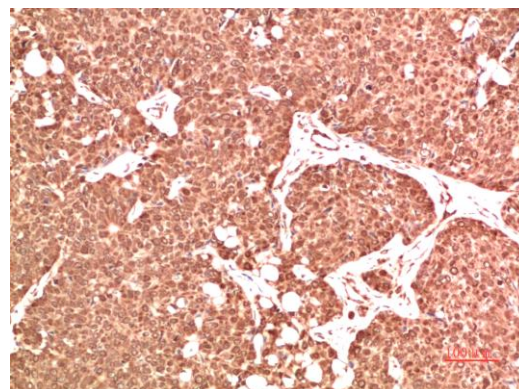
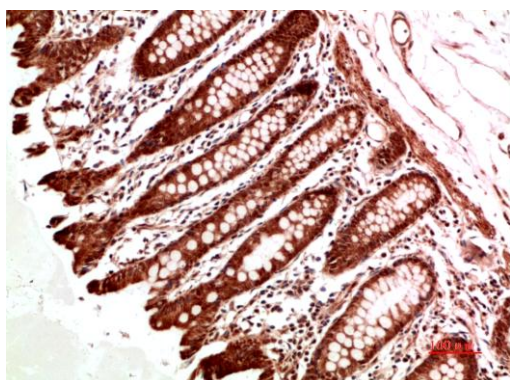
Recommended dilutions: IHC: 1:200-500

Optimal dilutions should be determined by the end user.

Specificity: The antibody can detects endogenous ATM proteins.

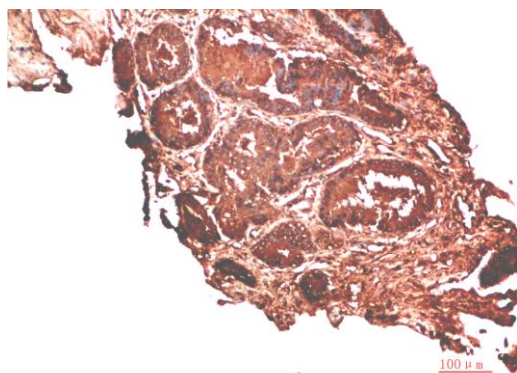
Alternative Names: AT1,ATA,ATDC,TEL1,A-T mutated antibody

Background: Ataxia telangiectasia mutated kinase (ATM) is a serine/threonine kinase that regulates cell cycle checkpoints and DNA repair. ATM kinase regulates a number of proteins involved in cell cycle checkpoint control, apoptosis, and DNA repair.



Immunohistochemical analysis of paraffin-embedded Human Colon Carcinoma Tissue using ATM (TDY652) Rabbit pAb diluted at 1:500

Immunohistochemical analysis of paraffin-embedded Human Breast Carcinoma Tissue using ATM (TDY652) Rabbit pAb diluted at 1:500.



Immunohistochemical analysis of paraffin-embedded Human Prostate Carcinoma Tissue using ATM (TDY652) Rabbit pAb diluted at 1:500.

Applications: WB-Western blot IHC-Immunochemistry IF-Immunofluorescence IP-Immunoprecipitation ChIP-Chormatin Immunoprecipitation
Reactivity: H-Human R-Rat M-Mouse Mk-Monkey Dg-Dog Ch-Chicken Hm-Hamster Rb-Rabbit Sh-Sheep Pg-Pig Z-Zebrafish