

CD10 Rabbit Polyclonal Antibody(CD10)

Catalog	TDY650C	TDY650F	Tel: 010-80117836
			Web: www.tdybio.com
Quantity	50μL	100μL	Entrez-Gene ID:4311 , Swiss-Prot Acc.P08473

For research use only.

Applications	Species Cross-Reactivity	Molecular Weight	Isotype
IHC	H, R, M	85	IgG

Storage Buffer & Condition: Antigen Affinity Purified IgG in PBS, pH 7.4, containing 0.02% **sodium azide** as Preservative and 50% Glycerol.

Store at **-20°C. Do not aliquot the antibody.**

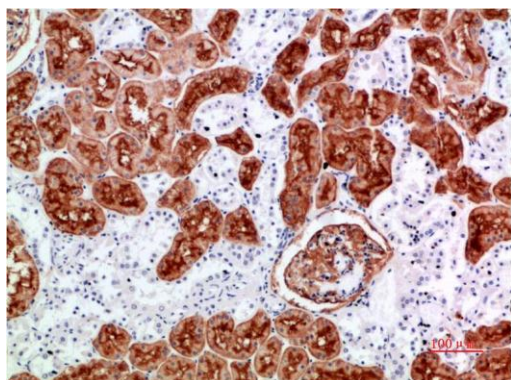
Recommended dilutions: IHC: 1:200-500

Optimal dilutions should be determined by the end user.

Specificity: The CD10 Rabbit Polyclonal Antibody can detects endogenous CD10 proteins.

Alternative Names: CALLA, Enkephalinase, MME, NEP, Neutral endopeptidase antibody

Background: CD10 is a zinc-dependent metalloprotease enzyme that degrades a number of small secreted peptides, most notably the amyloid beta peptide whose abnormal misfolding and aggregation in neural tissue has been implicated as a cause of Alzheimer's disease. Synthesized as a membrane-bound protein, the neprilysin ectodomain is released into the extracellular domain after it has been transported from the Golgi apparatus to the cell surface. In neurons, neprilysin is regulated by the protein nicastrin, a component of the gamma secretase complex that performs a necessary step in processing amyloid precursor protein to amyloid beta.



Immunohistochemical analysis of paraffin-embedded Human Kidney Tissue
using CD10 (TDY650) Rabbit pAb diluted at 1:500.