

## CHOP Mouse Monoclonal Antibody(2B1)

Catalog TDY636C TDY636F

Tel: 010-80117836

Web: [www.tdybio.com](http://www.tdybio.com)

Quantity 50 $\mu$ L 100 $\mu$ L

Entrez-Gene ID:1649 , Swiss-Prot Acc.P35638

**For research use only.**

Applications	Species Cross-Reactivity	Molecular Weight	Isotype
WB,IHC	H,R,M	~27KD	IgG1

**Storage Buffer & Condition:** PBS, pH 7.4, containing 0.02% **sodium azide** as Preservative and 50% Glycerol.

Store at **-20°C. Do not aliquot the antibody.**

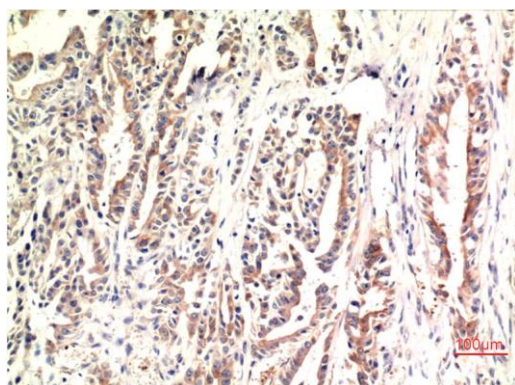
**Recommended dilutions:** WB: 1:1,000-2,000 IHC: 1:100-200

**Optimal dilutions should be determined by the end user.**

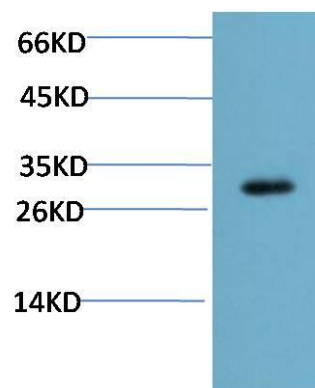
**Specificity:** Antibody can detects endogenous CHOP protein.

**Alternative Names:** GADD153, DDIT3,MGC4154

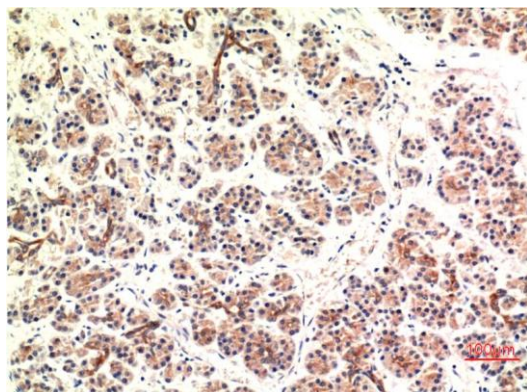
**Background:** CHOP was identified as a C/EBP-homologous protein that inhibits C/EBP and LAP in a dominant-negative manner. CHOP expression is induced by certain cellular stresses including starvation and the induced CHOP suppresses cell cycle progression from G1 to S phase.



Immunohistochemical analysis of paraffin-embedded Human Stomach Carcinoma Tissue using CHOP (TDY636) Mouse mAb diluted at 1:200.



Western blot analysis of Mouse Liver Tissue Lysate using CHOP (TDY636) Mouse mAb diluted at 1:2000.



Immunohistochemical analysis of paraffin-embedded Human Pancreas Carcinoma Tissue using CHOP (TDY636) Mouse mAb diluted at 1:200.

**Applications:** WB-Western blot IHC-Immunochemistry IF-Immunofluorescence IP-Immunoprecipitation ChIP-Chormatin Immunoprecipitation  
**Reactivity:** H-Human R-Rat M-Mouse Mk-Monkey Dg-Dog Ch-Chicken Hm-Hamster Rb-Rabbit Sh-Sheep Pg-Pig Z-Zebrafish