

Cyclin B1 Mouse Monoclonal Antibody(5C1)

Catalog TDY629C TDY629F

Tel: 010-82908854

Web: www.tdybio.com

Quantity 50μL 100μL

Entrez-Gene ID#891 , Swiss-Prot Acc.#P14635

For research use only.

Applications	Species Cross-Reactivity	Molecular Weight	Isotype
IHC	H, R, M	55KD	IgG

Storage Buffer & Condition: PBS, pH 7.4, containing 0.02% sodium azide as Preservative and 50% Glycerol.
Store at -20°C. Do not aliquot the antibody.

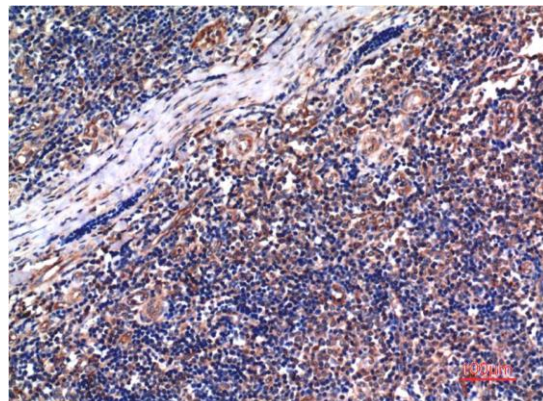
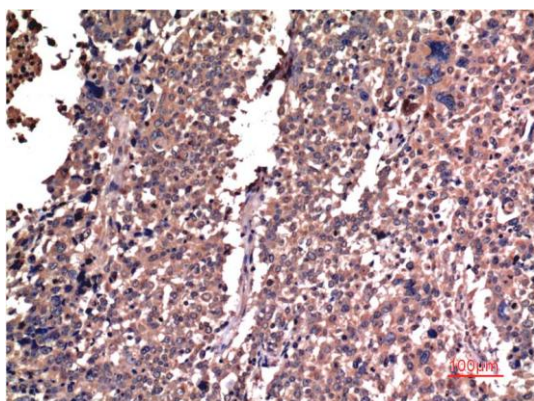
Recommended dilutions: IHC: 1:200-500

Optimal dilutions should be determined by the end user.

Specificity: Antibody can detects endogenous Cyclin B1 protein.

Alternative Names: CCNB1 antibody, G2 mitotic specific cyclin B1 antibody

Background: Cyclin B1 is a regulatory protein involved in mitosis. The gene product complexes with p34 (Cdk1) to form the maturation-promoting factor (MPF). Two alternative transcripts have been found, a constitutively expressed transcript and a cell cycle-regulated transcript that is expressed predominantly during G2/M phase of the cell cycle.



Immunohistochemical analysis of paraffin-embedded Human Lung Carcinoma Tissue using Cyclin B1 (TDY629) Mouse mAb diluted at 1:200. Immunohistochemical analysis of paraffin-embedded Human Tonsil Tissue using Cyclin B1 (TDY629) Mouse mAb diluted at 1:200.