

Caspase-3 Mouse Monoclonal Antibody(5H10)

Catalog TDY592C TDY592F

Tel: 010-80117836

Web: www.tdybio.com

Quantity 50μL 100μL

Entrez-Gene ID#836 , Swiss-Prot Acc.#P42574

For research use only.

Applications	Species Cross-Reactivity	Molecular Weight	Isotype
IHC	H,R,M	~17,32KD	IgG1

Storage Buffer & Condition: PBS, pH 7.4, containing 0.02% **sodium azide** as Preservative and 50% Glycerol.
Store at **-20°C**. **Do not aliquot the antibody.**

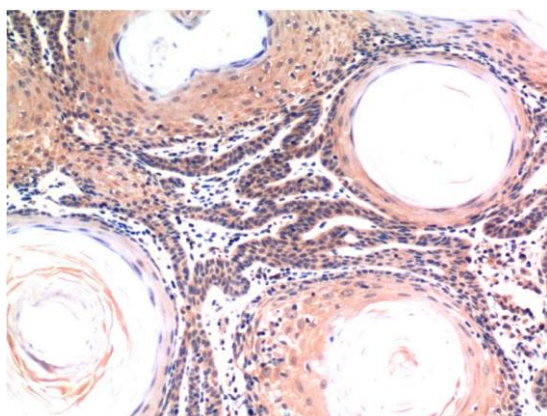
Recommended dilutions: IHC: 1:100-200

Optimal dilutions should be determined by the end user.

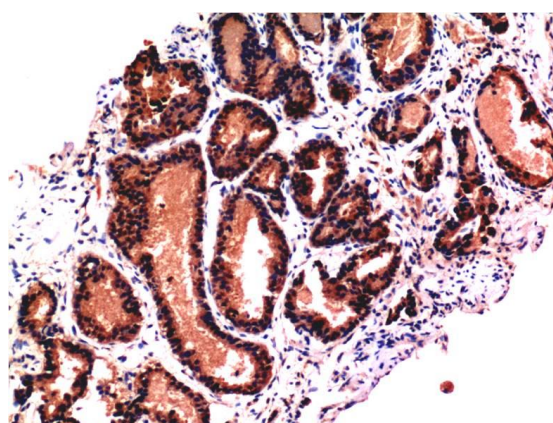
Specificity: Antibody can detects endogenous Active Caspase 3 protein.

Alternative Names: APOPAIN antibody, CASP 3 antibody, CPP32 antibody, Cysteine protease CPP32 antibody

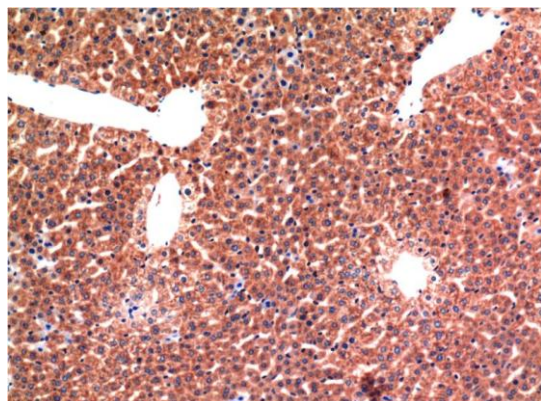
Background: Caspase-3 (CPP-32, Apoptain, Yama, SCA-1) is a critical executioner of apoptosis, as it is either partially or totally responsible for the proteolytic cleavage of many key proteins such as the nuclear enzyme poly(ADP-ribose) polymerase (PARP).



Immunohistochemical analysis of paraffin-embedded Human Skin Tissue using Caspase-3 (TDY592) Mouse mAb diluted at 1:200.



Immunohistochemical analysis of paraffin-embedded Human Prostate Tissue using Caspase-3 (TDY592) Mouse mAb diluted at 1:200.



Immunohistochemical analysis of paraffin-embedded Mouse Liver Tissue using Caspase-3 (TDY592) Mouse mAb diluted at 1:200.

Applications: WB-Western blot IHC-Immunochemistry IF-Immunofluorescence IP-Immunoprecipitation ChIP-Chromatin Immunoprecipitation
Reactivity: H-Human R-Rat M-Mouse Mk-Monkey Dg-Dog Ch-Chicken Hm-Hamster Rb-Rabbit Sh-Sheep Pg-Pig Z-Zebrafish