

β -actin Rabbit Polyclonal Antibody(A283)

Catalog TDY575C TDY575F

Tel: 010-80117836

Web: www.tdybio.com

Quantity 50 μ L 100 μ L

Entrez-Gene ID# 60, Swiss-Prot Acc.#P60709

For research use only.

Applications	Species Cross-Reactivity	Molecular Weight	Isotype
WB, IHC	H, R, M	~43KD	IgG

Storage Buffer & Condition: Antigen Affinity Purified IgG in PBS, pH 7.4, containing 0.02% **sodium azide** as Preservative and 50% Glycerol.

Store at **-20°C. Do not aliquot the antibody.**

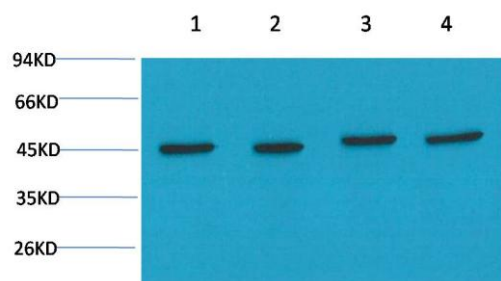
Recommended dilutions: WB: 1:2,000-5,000 IHC: 1:100-200

Optimal dilutions should be determined by the end user.

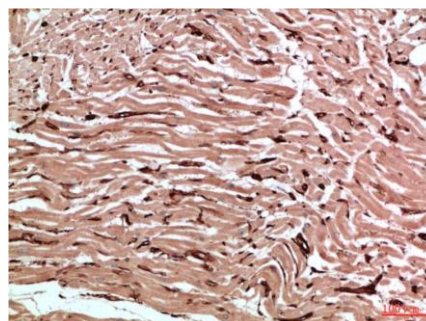
Specificity: Antibody can detect endogenous β -actin protein.

Alternative Names: actin antibody, b-actin antibody, beta-actin antibody

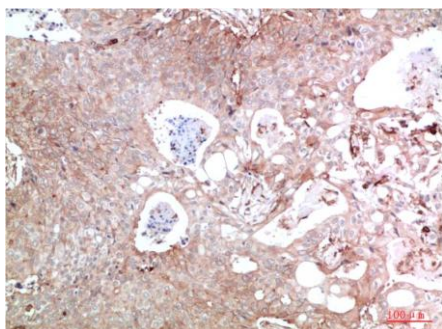
Background: β -actin is one of six different actin isoforms that have been identified. The actin molecules found in cells of various species and tissues tend to be very similar in their immunological and physical properties. Therefore, antibodies against β -actin are useful as loading controls for Western Blotting. However it should be noted that levels of β -actin may not be stable in certain cells. For example, expression of β -actin in adipose tissue is very low and therefore β -actin should not be used as loading control for these tissues.



Western blot analysis of 1) HeLa Cell Lysate, 2) C2C12 Cell Lysate, 3) PC12 Cell Lysate, 4) Rat Brain Tissue Lysate using β -actin (TDY575) Rabbit pAb diluted at 1:5000.



Immunohistochemical analysis of paraffin-embedded Human Heart Tissue using β -actin (TDY575) Rabbit pAb diluted at 1:200.



Immunohistochemical analysis of paraffin-embedded Human Breast Carcinoma Tissue using β -actin (TDY575) Rabbit pAb diluted at 1:200.

Applications: WB-Western blot IHC-Immunohistochemistry IF-Immunofluorescence IP-Immunoprecipitation ChIP-Chromatin Immunoprecipitation
Reactivity: H-Human R-Rat M-Mouse Mk-Monkey Dg-Dog Ch-Chicken Hm-Hamster Rb-Rabbit Sh-Sheep Pg-Pig Z-Zebrafish