

## KV10.2 Rabbit Polyclonal Antibody(A260)

Catalog TDY552C TDY552F

Tel: 010-80117836

Web: [www.tdybio.com](http://www.tdybio.com)

Quantity 50μL 100μL

Entrez-Gene ID# 238271, Swiss-Prot Acc.#Q8NCM2

**For research use only.**

Applications	Species Cross-Reactivity	Molecular Weight	Isotype
WB,IHC	H,R,M	~60KD	IgG

**Storage Buffer & Condition:** Antigen Affinity Purified IgG in PBS, pH 7.4, containing 0.02% **sodium azide** as Preservative and 50% Glycerol.

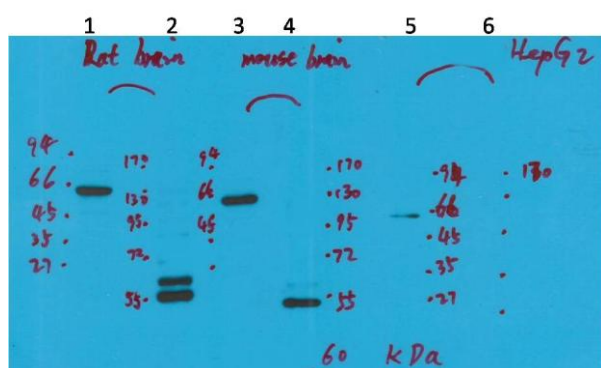
Store at **-20°C. Do not aliquot the antibody.**

**Recommended dilutions:** WB: 1:1,000-2,000 IHC: 1:100-200

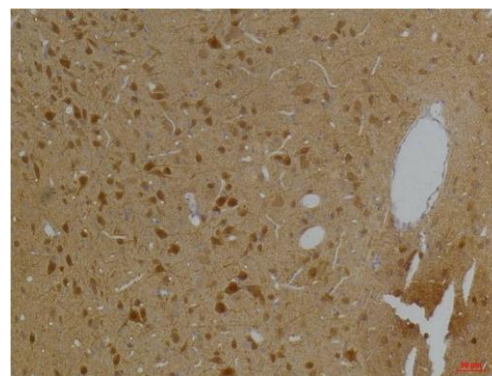
**Optimal dilutions should be determined by the end user.**

**Specificity:** Antibody can detects endogenous KV10.2 protein.

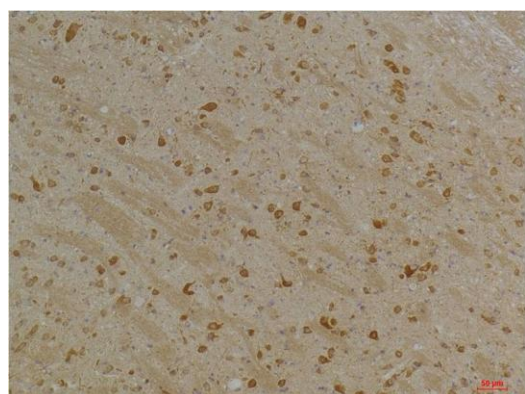
**Alternative Names:** EAG2,H EAG2,KCNH5



Western blot analysis of 1) Rat Brain Tissue-Low Molecular Protein Marker, 2)Rat Brain Tissue-High Molecular Protein Marker, 3) Mouse Brain Tissue-Low Molecular Protein Marker, 4) Mouse Brain Tissue- High Molecular Protein Marker, 5) HepG2-Low Molecular Protein Marker, 6) HepG2-High Molecular Protein Marker with KV10.2 Rabbit pAb TDY552 diluted at 1:2,000.



Immunohistochemical analysis of paraffin-embedded Rat BrainTissue using Kv10.2 (TDY552) Rabbit pAb diluted at 1:200.



Immunohistochemical analysis of paraffin-embedded Mouse BrainTissue using Kv10.2 (TDY552) Rabbit pAb diluted at 1:200.

Applications: WB-Western blot IHC-Immunochemistry IF-Immunofluorescence IP-Immunoprecipitation ChIP-Chormatin Immunoprecipitation  
Reactivity: H-Human R-Rat M-Mouse Mk-Monkey Dg-Dog Ch-Chicken Hm-Hamster Rb-Rabbit Sh-Sheep Pg-Pig Z-Zebrafish