

## GABA A Receptor $\alpha 3$ Rabbit Polyclonal Antibody(A225)

Catalog TDY526C TDY526F

Tel: 010-80117836

Web: www.tdybio.com

Quantity 50 $\mu$ L 100 $\mu$ L

Entrez-Gene ID# 2556, Swiss-Prot Acc.#P34903

**For research use only.**

Applications	Species Cross-Reactivity	Molecular Weight	Isotype
WB,IHC	H,R,M	~55KD	IgG

**Storage Buffer & Condition:** Antigen Affinity Purified IgG in PBS, pH 7.4, containing 0.02% **sodium azide** as Preservative and 50% Glycerol.

Store at **-20°C. Do not aliquot the antibody.**

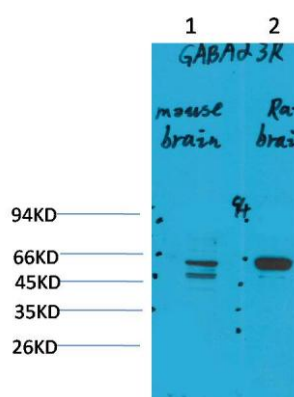
**Recommended dilutions:**WB: 1:1,000-2,000 IHC: 1:100-200

**Optimal dilutions should be determined by the end user.**

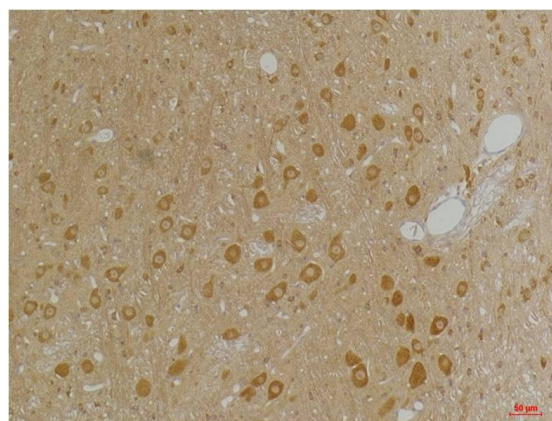
**Specificity:** Antibody can detects endogenous GABA A Receptor  $\alpha 3$  protein.

**Alternative Names:**GABRA3,GBRA3, GABA A receptor subunit alpha 3

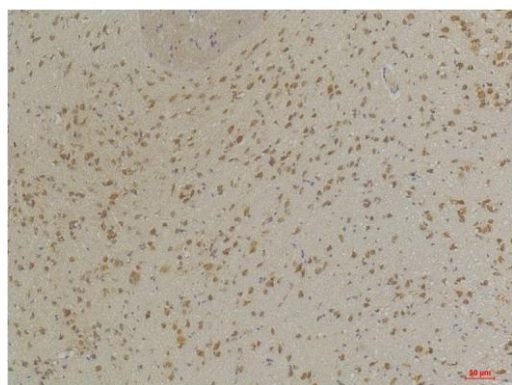
**Background:** GABA, the major inhibitory neurotransmitter in the vertebrate brain, mediates neuronal inhibition by binding to the GABA/benzodiazepine receptor and opening an integral chloride channel.



Western blot analysis of 1) Mouse Brain Tissue, 2) Rat Brain Tissue with GABA A Receptor  $\alpha 3$  Rabbit pAb TDY526 diluted at 1:2,000.



Immunohistochemical analysis of paraffin-embedded Rat Brain Tissue using GABA A Receptor  $\alpha 3$  (TDY526) Rabbit pAb diluted at 1:200.



Immunohistochemical analysis of paraffin-embedded Mouse Brain Tissue using GABA A Receptor  $\alpha 3$  (TDY526) Rabbit pAb diluted at 1:200.

**Applications:** WB-Western blot IHC-Immunochemistry IF-Immunofluorescence IP-Immunoprecipitation ChIP-Chromatin Immunoprecipitation  
**Reactivity:** H-Human R-Rat M-Mouse Mk-Monkey Dg-Dog Ch-Chicken Hm-Hamster Rb-Rabbit Sh-Sheep Pg-Pig Z-Zebrafish