

EphA1 Rabbit Polyclonal Antibody(A222)

Catalog TDY523C TDY523F

Tel: 010-80117836

Web: www.tdybio.com

Quantity 50μL 100μL

Entrez-Gene ID# 2041, Swiss-Prot Acc.#P21709

For research use only.

Applications	Species Cross-Reactivity	Molecular Weight	Isotype
WB,IHC	H,R,M	~110KD	IgG

Storage Buffer & Condition: Antigen Affinity Purified IgG in PBS, pH 7.4, containing 0.02% **sodium azide** as Preservative and 50% Glycerol.

Store at **-20°C. Do not aliquot the antibody.**

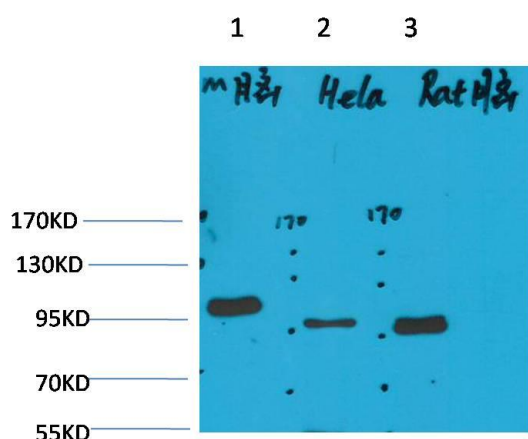
Recommended dilutions:WB: 1:1,000-2,000 IHC: 1:100-200

Optimal dilutions should be determined by the end user.

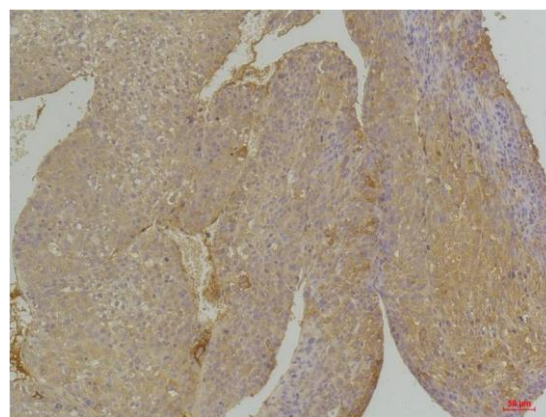
Specificity: Antibody can detects endogenous EphA1 protein.

Alternative Names: EPH Receptor A1, MGC163163, Tyrosin protein kinase receptor EPH

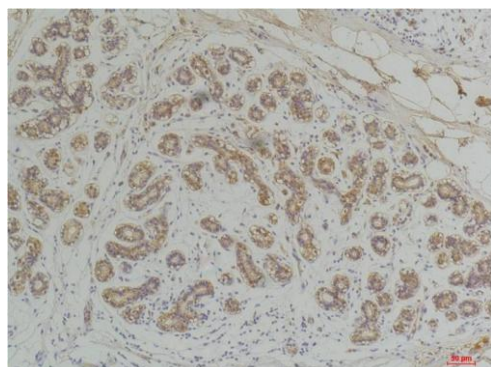
Background: The Eph receptors are the largest known family of receptor tyrosine kinases (RTKs). They can be divided into two groups based on sequence similarity and on their preference for a subset of ligands.



Western blot analysis of 1)Mouse Brain Tissue, 2)Hela, 3)Rat Brain Tissue with EphA1 Rabbit pAb TDY523 diluted at 1:2,000.



Immunohistochemical analysis of paraffin-embedded Human Hepatocarcinoma using EphA1 (TDY523) Rabbit pAb diluted at 1:200.



Immunohistochemical analysis of paraffin-embedded Human Breast Carcinoma using EphA1 (TDY523) Rabbit pAb diluted at 1:200.

Applications: WB-Western blot IHC-Immunochemistry IF-Immunofluorescence IP-Immunoprecipitation ChIP-Chormatin Immunoprecipitation
Reactivity: H-Human R-Rat M-Mouse Mk-Monkey Dg-Dog Ch-Chicken Hm-Hamster Rb-Rabbit Sh-Sheep Pg-Pig Z-Zebrafish