



## Connexin-26 Rabbit Polyclonal Antibody(A219)

Catalog TDY520C TDY520F

Tel: 010-80117836

Web: [www.tdybio.com](http://www.tdybio.com)

Quantity 50μL 100μL

Entrez-Gene ID# 2706, Swiss-Prot Acc.#P29033

**For research use only.**

Applications	Species Cross-Reactivity	Molecular Weight	Isotype
IHC	H,M	~26KD	IgG

**Storage Buffer & Condition:** Antigen Affinity Purified IgG in PBS, pH 7.4, containing 0.02% **sodium azide** as Preservative and 50% Glycerol.

Store at **-20°C**. **Do not aliquot the antibody.**

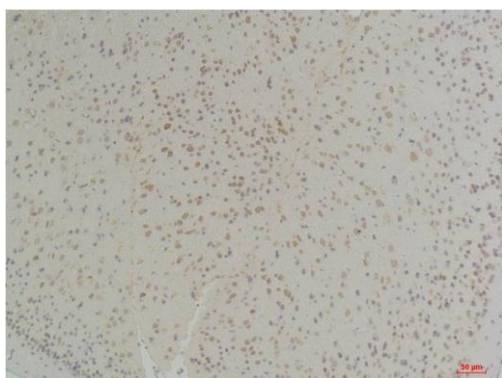
**Recommended dilutions:**IHC: 1:100-200

**Optimal dilutions should be determined by the end user.**

**Specificity:** Antibody can detects endogenous Connexin-26 protein.

**Alternative Names:** GJB2,CX26,DFNA3,DFNB1, HID,NSRD1,PPK

**Background:** One gap junction consists of a cluster of closely packed pairs of transmembrane channels, the connexons, through which materials of low MW diffuse from one cell to a neighboring cell.



Immunohistochemical analysis of paraffin-embedded Mouse Brain Tissue  
using Connexin-26 (TDY520) Rabbit pAb diluted at 1:200.