

CLIC4 Rabbit Polyclonal Antibody(A217)

Catalog TDY518C TDY518F

Tel: 010-80117836

Web: www.tdybio.com

Quantity 50μL 100μL

Entrez-Gene ID# 25932, Swiss-Prot Acc.#Q9Y696

For research use only.

Applications	Species Cross-Reactivity	Molecular Weight	Isotype
WB,IHC	H,R,M	~30KD	IgG

Storage Buffer & Condition: Antigen Affinity Purified IgG in PBS, pH 7.4, containing 0.02% **sodium azide** as Preservative and 50% Glycerol.

Store at **-20°C. Do not aliquot the antibody.**

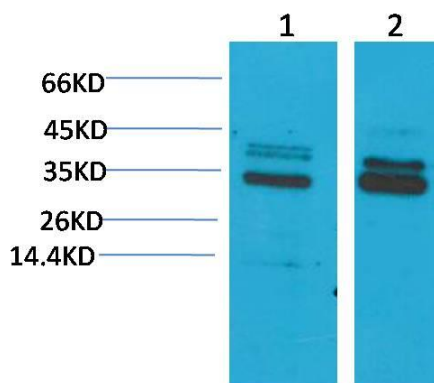
Recommended dilutions:WB: 1:1,000-2,000 IHC: 1:100-200

Optimal dilutions should be determined by the end user.

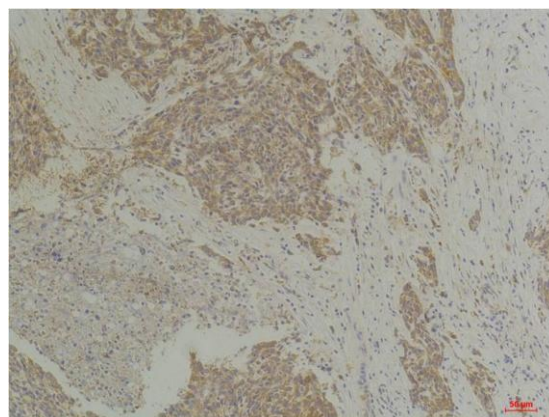
Specificity: Antibody can detects endogenous CLIC4 protein.

Alternative Names: Chloride channel 4, FLJ38640,MC3S5,mtCLIC,p64H1,HUH1

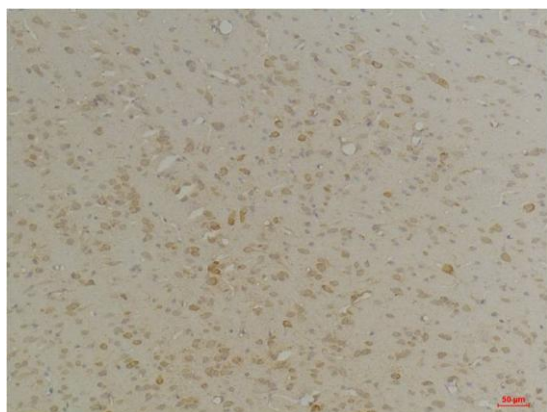
Background: Membrane insertion seems to be redox-regulated and may occur only under oxydizing conditions. Involved in regulation of the cell cycle.



Western blot analysis of 1) Mouse Brain Tissue, 2) Rat Brain Tissue, with CLIC4 Rabbit pAb TDY518 diluted at 1:2,000.



Immunohistochemical analysis of paraffin-embedded Human Breast Carcinoma using CLIC4 (TDY518) Rabbit pAb diluted at 1:200.



Immunohistochemical analysis of paraffin-embedded Rat Brain Tissue using CLIC4 (TDY518) Rabbit pAb diluted at 1:200.

Applications: WB-Western blot IHC-Immunochemistry IF-Immunofluorescence IP-Immunoprecipitation ChIP-Chormatin Immunoprecipitation
Reactivity: H-Human R-Rat M-Mouse Mk-Monkey Dg-Dog Ch-Chicken Hm-Hamster Rb-Rabbit Sh-Sheep Pg-Pig Z-Zebrafish