

Rubisco(Large Chain) Mouse Monoclonal Antibody(3G7)

Catalog TDY484C TDY484F

Tel: 010-80117836

Web: www.tdybio.com

Quantity 50μL 100μL

Entrez-Gene ID: , Swiss-Prot Acc.

For research use only.

Applications	Species Cross-Reactivity	Molecular Weight	Isotype
WB	Various Plants	~53KD	IgG1

Storage Buffer & Condition: PBS, pH 7.4, containing 0.02% **sodium azide** as Preservative and 50% Glycerol.
Store at **-20°C. Do not aliquot the antibody.**

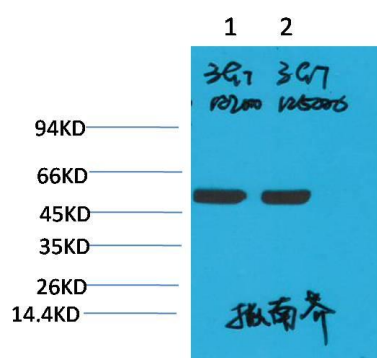
Recommended dilutions: WB: 1:2,000-10,000

Optimal dilutions should be determined by the end user.

Specificity: The Rubisco Mouse Polyclonal Antibody can detects endogenous Rubisco Large Chain protein.

Alternative Names: Ribulose biphosphate carboxylase oxygenase

Background: Ribulose-1,5-bisphosphate carboxylase oxygenase, commonly known by the abbreviation **RuBisCO**, is an enzyme involved in the first major step of carbon fixation, a process by which atmospheric carbon dioxide is converted by plants to energy-rich molecules such as glucose.



Western blot analysis of Arabidopsis with Rubisco(Large Chain) Mouse mAb

TDY484 diluted at

1)1:2,000

2)1:5,000