

## Cyclin D1 Rabbit Polyclonal Antibody(F279)

Catalog TDY438C TDY432F

Tel: 010-82908854

Web: www.tdybio.com

Quantity 50μL 100μL

Entrez-Gene ID#595 , Swiss-Prot Acc.#P24385

**For research use only.**

Applications	Species Cross-Reactivity	Molecular Weight	Isotype
WB, IHC	R, M	36KD	IgG

**Storage Buffer & Condition:** Antigen Affinity Purified IgG in PBS, pH 7.4, containing 0.02% **sodium azide** as Preservative and 50% Glycerol.

Store at **-20°C**. **Do not aliquot the antibody.**

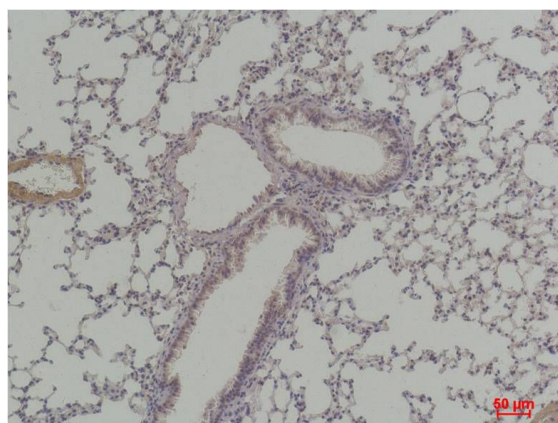
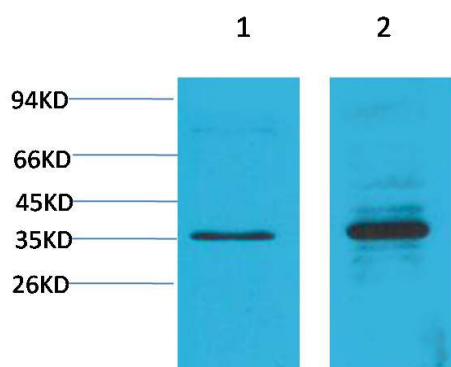
**Recommended dilutions:** WB: 1:500-1,000 IHC: 1:100-200

**Optimal dilutions should be determined by the end user.**

**Specificity:** Antibody can detects endogenous Cyclin D1 protein.

**Alternative Names:** B cell leukemia 1 antibody, BCL-1 antibody, CCND1 antibody, MGC137744 antibody, PRAD1 antibody

**Background:** Cyclin D is a member of the cyclin protein family that is involved in regulating cell cycle progression. The synthesis of cyclin D is initiated during G1 and drives the G1/S phase transition.



Western blot analysis of 1) C2C12, 2) Rat Heart Tissue with Cyclin D1 Rabbit pAb TDY438 diluted at 1:2,000.

Immunohistochemical analysis of paraffin-embedded Mouse Lung Tissue using Cyclin D1 (TDY438) Rabbit pAb diluted at 1:200.