

## Cyclin B1 Rabbit Polyclonal Antibody(F276)

Catalog TDY437C TDY437F

Tel: 010-82908854

Web: www.tdybio.com

Quantity 50μL 100μL

Entrez-Gene ID#891 , Swiss-Prot Acc.#P14635

**For research use only.**

Applications	Species Cross-Reactivity	Molecular Weight	Isotype
WB, IHC	H, R, M	55KD	IgG

**Storage Buffer & Condition:** Antigen Affinity Purified IgG in PBS, pH 7.4, containing 0.02% **sodium azide** as Preservative and 50% Glycerol.

Store at **-20°C. Do not aliquot the antibody.**

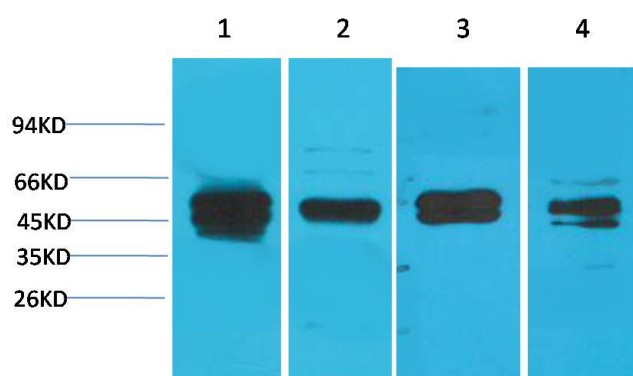
**Recommended dilutions:** WB: 1:1,000-2,000 IHC: 1:200-500

**Optimal dilutions should be determined by the end user.**

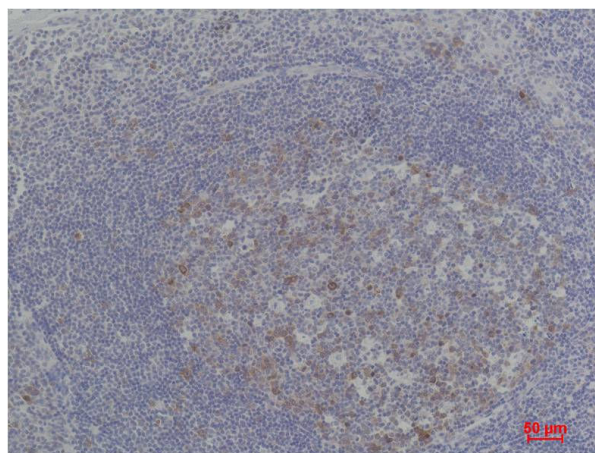
**Specificity:** Antibody can detects endogenous Cyclin B1 protein.

**Alternative Names:** CCNB1 antibody, G2 mitotic specific cyclin B1 antibody

**Background:** Cyclin B1 is a regulatory protein involved in mitosis. The gene product complexes with p34 (Cdk1) to form the maturation-promoting factor (MPF). Two alternative transcripts have been found, a constitutively expressed transcript and a cell cycle-regulated transcript that is expressed predominantly during G2/M phase of the cell cycle.



Western blot analysis of 1) Jurkat, 2) HeLa, 3) C2C12, 4) Rat Liver Tissue with Cyclin B1 Rabbit pAb TDY437 diluted at 1:2,000.



Immunohistochemical analysis of paraffin-embedded Human Tonsil Carcinoma using Cyclin B1 (TDY437) Rabbit pAb diluted at 1:500.