

P21 Rabbit Polyclonal Antibody(F210)

Catalog TDY429C TDY429F

Tel: 010-82908854

Web: www.tdybio.com

Quantity 50μL 100μL

Entrez-Gene ID#1026 , Swiss-Prot Acc.#P38936

For research use only.

Applications	Species Cross-Reactivity	Molecular Weight	Isotype
WB, IHC	H, R, M	21KD	IgG

Storage Buffer & Condition: Antigen Affinity Purified IgG in PBS, pH 7.4, containing 0.02% **sodium azide** as Preservative and 50% Glycerol.

Store at **-20°C. Do not aliquot the antibody.**

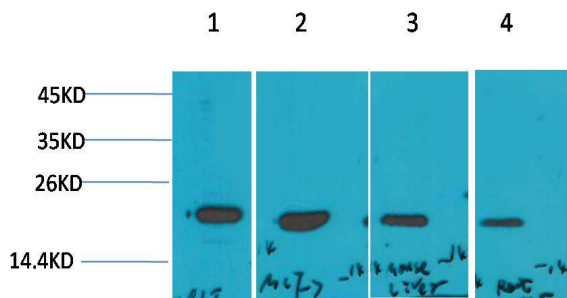
Recommended dilutions: WB: 1:1,000-2,000 IHC: 1:100-200

Optimal dilutions should be determined by the end user.

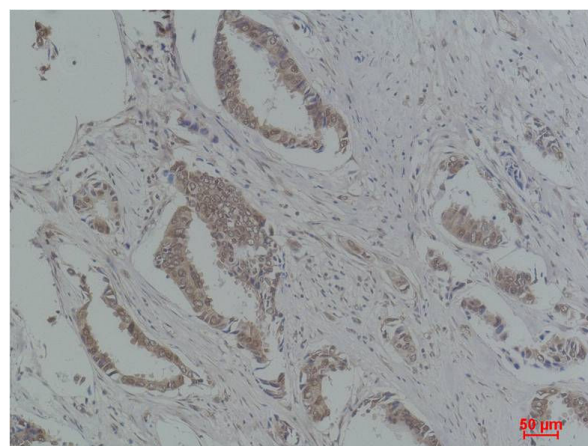
Specificity: Antibody can detects endogenous P21 protein.

Alternative Names: CDKN1 antibody, CDKI antibody, CDKN1A antibody, MDA 6 antibody, p21 cip1 antibody, p21waf antibody

Background: p21 / WAF1 / CIP1 also known as cyclin-dependent kinase inhibitor 1 or CDK-interacting protein 1 is a protein that in humans is encoded by the *CDKN1A* gene. p21 is a potent cyclin-dependent kinase inhibitor (CKI). The p21 (CIP1/WAF1) protein binds to and inhibits the activity of cyclin-CDK2, -CDK1, and -CDK4/6 complexes, and thus functions as a regulator of cell cycle progression at G₁ and S phase.



Western blot analysis of 1) 293T, 2)MCF7, 3)Mouse Liver Tissue, 4) Rat Liver Tissue with P21 Rabbit pAb TDY429 diluted at 1:2,000.



Immunohistochemical analysis of paraffin-embedded Human Breast Carcinoma using P21 (TDY429) Rabbit pAb diluted at 1:200.