

Histone H2B(Acetyl Lys12) Rabbit Polyclonal Antibody

Catalog	TDY270C	TDY270F
Quantity	50 μ L	100 μ L

Tel: 010-82908854
Free: 400-0620-621
Web: www.tdybio.com

For research use only.

Applications	Species Cross-Reactivity	Molecular Weight	Isotype
WB, IHC	H, R, M	14KD	IgG

Storage Buffer & Condition: **Rabbit Antiserum**, containing 0.02% **sodium azide** as Preservative and 50% Glycerol.

Store at **-20°C**. **Do not aliquot the antibody.**

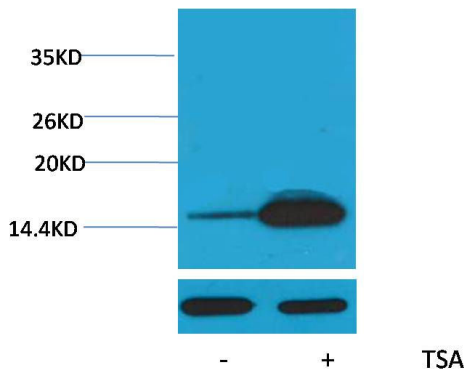
Recommended dilutions: WB: 1:1,000-2,000 IHC: 1:100-200

Optimal dilutions should be determined by the end user.

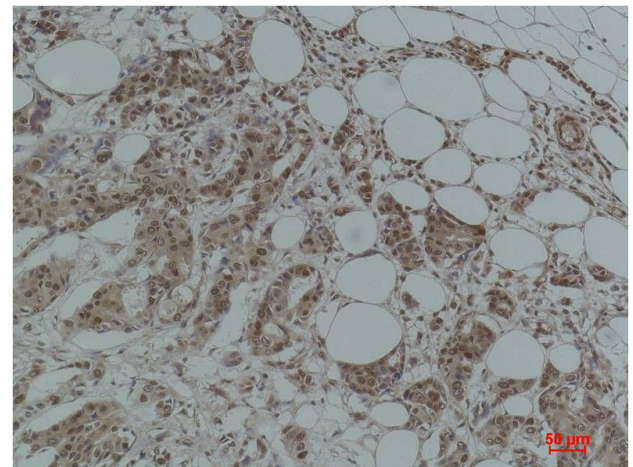
Specificity: The Histone H2B(Acetyl Lys12) Rabbit Polyclonal Antibody can detect endogenous Histone H2B(Acetyl Lys12) protein.

Alternative Names: H2B GL105 antibody, H2B.1 antibody, Histone H2B type 1B antibody, HIST1H2BB antibody

Background: Histone H2B is one of the 5 main histone proteins involved in the structure of chromatin in eukaryotic cells.



Western blot analysis of extracts from HeLa cells, untreated (-) or treated with TSA (1 μ M, 18 hr; +), using Acetyl-Histone H2B (Lys12) Rabbit pAb (upper) TDY2701:2000 and β -actin (5B7) Mouse mAb (lower) TDY041 1:5000.



Immunohistochemical analysis of paraffin-embedded Human Breast Carcinoma using Histone H2B (Acetyl Lys12) (TDY270) Rabbit pAb diluted at 1:200.