

IκB α Rabbit Polyclonal Antibody(F169)

Catalog TDY399C TDY399F

Tel: 010-82908854

Web: www.tdybio.com

Quantity 50μL 100μL

Entrez-Gene ID:4792, Swiss-Prot Acc.P25963

For research use only.

Applications	Species Cross-Reactivity	Molecular Weight	Isotype
WB, IHC	H, R	40KD	IgG

Storage Buffer & Condition: Antigen Affinity Purified IgG in PBS, pH 7.4, containing 0.02% **sodium azide** as Preservative and 50% Glycerol.

Store at **-20°C**. **Do not aliquot the antibody.**

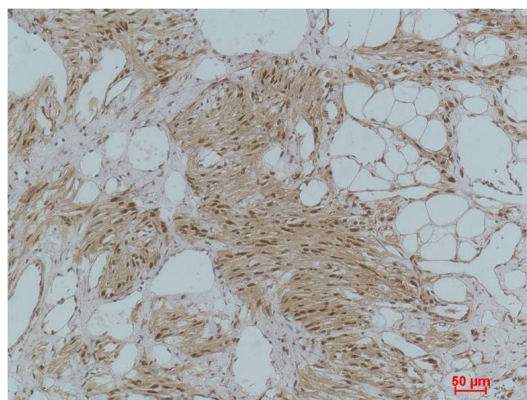
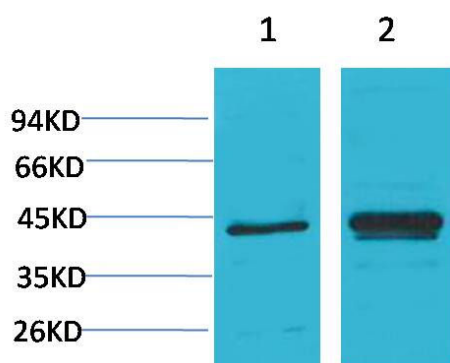
Recommended dilutions: WB: 1:2,000-5,000 IHC: 1:200-500

Optimal dilutions should be determined by the end user.

Specificity: Antibody can detects endogenous IκB α protein.

Alternative Names: I kappa B alpha antibody, IκB-alpha antibody, IKBA antibody, MAD3 antibody, NFκB inhibitor antibody

Background: Inhibits the activity of dimeric NF-kappa-B/REL complexes by trapping REL dimers in the cytoplasm through masking of their nuclear localization signals. IκBα phosphorylation and resulting Rel-dependent transcription are activated by a highly diverse group of extracellular signals including inflammatory cytokines, growth factors, and chemokines.



Western blot analysis of 1) Hela, 2)PC12 with IκB α Rabbit pAb TDY399 diluted at 1:2,000.

Immunohistochemical analysis of paraffin-embedded Human Kidney Tissue using IκB α (TDY399) Rabbit pAb diluted at 1:500.