

Histone H4(Acetyl Lys16) Rabbit Polyclonal Antibody

Catalog TDY287C TDY287F

Tel: 010-82908854

Free: 400-0620-621

Quantity 50μL 100μL

Web: www.tdybio.com

For research use only.

Applications	Species Cross-Reactivity	Molecular Weight	Isotype
WB, IHC	H, R, M	14KD	IgG

Storage Buffer & Condition: Immunogen Affinity Purified Rabbit IgG, 1mg/ml in PBS pH7.4, containing 0.02% sodium azide as Preservative and 50% Glycerol.

Store at **-20°C**. **Do not aliquot the antibody.**

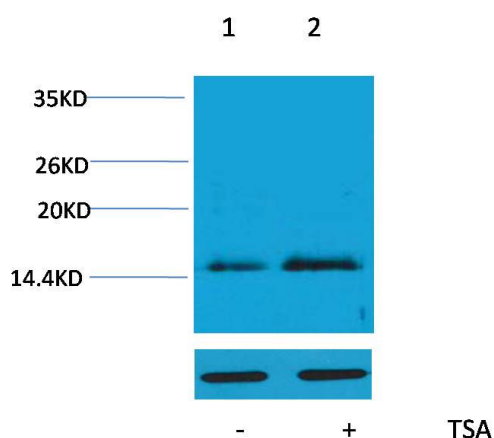
Recommended dilutions: WB: 1:1,000-2,000 IHC:1:200-500

Optimal dilutions should be determined by the end user.

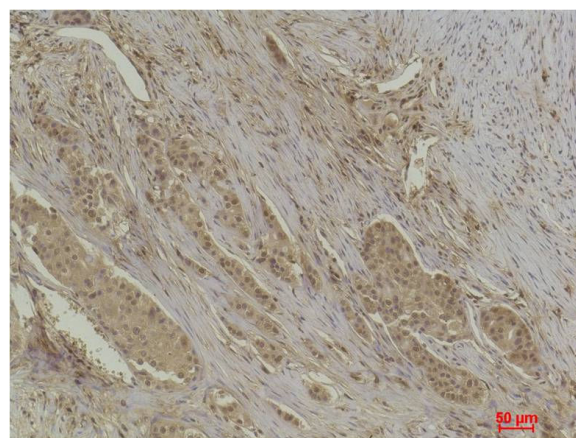
Specificity: The Histone H4(Acetyl Lys16) Rabbit Polyclonal Antibody can detects endogenous Histone H3 (Acetyl Lys16) protein.

Alternative Names: Histone 1 H4 antibody, HIST1H4K antibody, MGC24116 antibody, dJ160A22.1 antibody

Background: Histone H4 is one of the 5 main histone proteins involved in the structure of chromatin in eukaryotic cells. H4 is a structural component of the nucleosome, and is subject to covalent modification, including acetylation and methylation, which may alter expression of genes located on DNA associated with its parent histone octamer.



Western blot analysis of extracts from HeLa cells, untreated (-) or treated with TSA (1μM, 18 hr; +), using Acetyl-Histone H4(Lys16) Rabbit pAb (upper) TDY287 1:2,000 and β-actin (5B7) Mouse mAb (lower) TDY041 1:5,000.



Immunohistochemical analysis of paraffin-embedded Human Breast Carcinoma using Histone H4 (Acetyl Lys16) (TDY287) Rabbit pAb diluted at 1:500.