

## Histone H1(Phospho Thr17) Rabbit Polyclonal Antibody

Catalog TDY279C TDY279F

Tel: 010-82908854

Free: 400-0620-621

Quantity 50μL 100μL

Web: www.tdybio.com

**For research use only.**

Applications	Species Cross-Reactivity	Molecular Weight	Isotype
WB, IHC	H, R, M	17-25KD	IgG

**Storage Buffer & Condition:** **Rabbit Antiserum**, containing 0.02% **sodium azide** as Preservative and 50% Glycerol.

Store at **-20°C**. **Do not aliquot the antibody.**

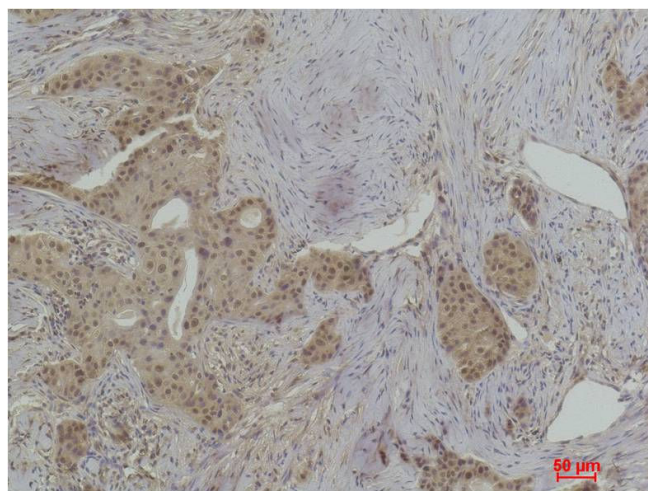
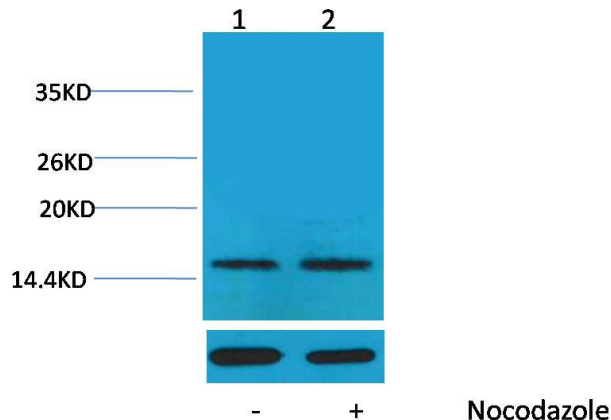
**Recommended dilutions:** WB: 1:1,000-2,000 IHC:1:200-500

**Optimal dilutions should be determined by the end user.**

**Specificity:** The Histone H1(Phospho Thr17) antibody can detects endogenous Histone H1(Phospho Thr17) protein.

**Alternative Names:** H1 antibody, HIST1H1B antibody, Histone 1 antibody, Histone H1a antibody

**Background:** Histone H1 is one of the five main histone protein families which are components of chromatin in eukaryotic cells. May play a key role in the control of gene expression during oogenesis and early embryogenesis, presumably through the perturbation of chromatin structure.



Western blot analysis of extracts from HeLa cells, untreated (-) or treated with Nocodazole (1μg/ml, 24 hr; +), using Phospho-Histone H1(Thr17) Rabbit pAb (upper) TDY2791:2,000 and β-actin (5B7) Mouse mAb (lower) TDY041 1:5000.

Immunohistochemical analysis of paraffin-embedded Human Breast Carcinoma using Histone H1 (Phospho Thr17) (TDY279) Rabbit pAb diluted at 1:500.