

Histone H2A(Acetyl Lys15) Rabbit Polyclonal Antibody

Catalog	TDY268C	TDY268F
Quantity	50 μ L	100 μ L

Tel: 010-82908854
Free: 400-0620-621
Web: www.tdybio.com

For research use only.

Applications	Species Cross-Reactivity	Molecular Weight	Isotype
WB, IHC	H, R, M	14KD	IgG

Storage Buffer & Condition: **Rabbit Antiserum**, containing 0.02% **sodium azide** as Preservative and 50% Glycerol.

Store at **-20°C**. **Do not aliquot the antibody.**

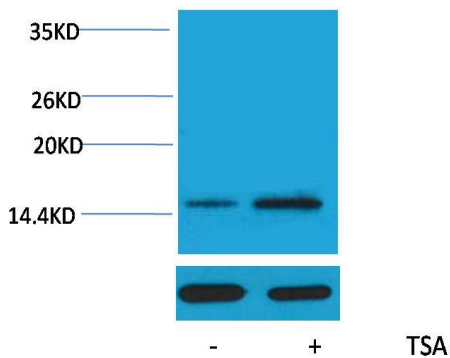
Recommended dilutions: WB: 1:500-1,000 IHC: 1:200-500

Optimal dilutions should be determined by the end user.

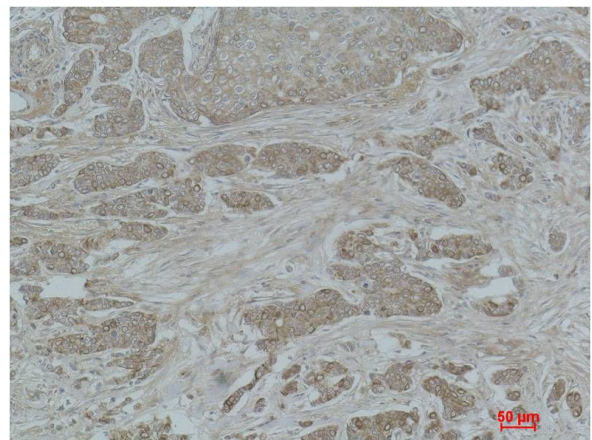
Specificity: The Histone H2A(Acetyl Lys15) Rabbit Polyclonal Antibody can detect endogenous Histone H2A(Acetyl Lys15) protein.

Alternative Names: H2A 615 antibody, H2A GL101 antibody, H2A.1 antibody, HIST1H2AE antibody, MGC74460 antibody

Background: Histone H2A is one of the five main histone proteins involved in the structure of chromatin in eukaryotic cells. Core component of nucleosome. Nucleosomes wrap and compact DNA into chromatin, limiting DNA accessibility to the cellular machineries which require DNA as a template.



Western blot analysis of extracts from HeLa cells, untreated (-) or treated with TSA (1 μ M, 18 hr; +), using Acetyl-Histone H2A (Lys15) Rabbit pAb (upper) TDY2681:2000 and β -actin (5B7) Mouse mAb (lower) TDY041 1:5000.



Immunohistochemical analysis of paraffin-embedded Human Breast Carcinoma using Histone H2A (Acetyl Lys15) (TDY268) Rabbit pAb diluted at 1:500.