

Histone H3(Acetyl Lys36) Rabbit Polyclonal Antibody

Catalog TDY261C TDY261F

Tel: 010-82908854

Quantity 50 μ L 100 μ L

Free: 400-0620-621

Web: www.tdybio.com

For research use only.

Applications	Species	Cross-Reactivity	Molecular Weight	Isotype
WB, IHC	H, R, M		15-17KD	IgG

Storage Buffer & Condition: Purified Rabbit IgG, 1mg/ml in PBS pH7.4, containing 0.02% **sodium azide** as Preservative and 50% Glycerol.

Store at **-20°C. Do not aliquot the antibody.**

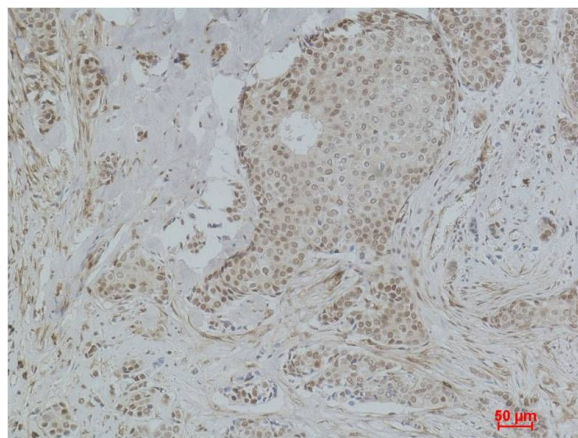
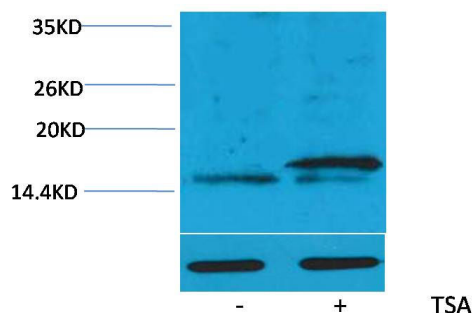
Recommended dilutions: WB: 1:200-500 IHC: 1:200-500

Optimal dilutions should be determined by the end user.

Specificity: The Histone H3(Acetyl Lys36) Rabbit Polyclonal Antibody can detect endogenous Histone H3 (Acetyl Lys36) protein.

Alternative Names: H3 histone antibody, HIST1H3A antibody, Histone cluster 1, H3a antibody

Background: Histone H3 is one of the five main histone proteins involved in the structure of chromatin in eukaryotic cells. Core component of nucleosome. Nucleosomes wrap and compact DNA into chromatin, limiting DNA accessibility to the cellular machineries which require DNA as a template. Histones thereby play a central role in transcription regulation, DNA repair, DNA replication and chromosomal stability.



Western blot analysis of extracts from HeLa cells, untreated (-) or treated with TSA (1 μ M, 18 hr; +), using Acetyl-Histone H3 (Lys36) Rabbit pAb (upper) TDY2611:2000 and Histone H3 (1G1) Mouse mAb (lower) TDY055 1:2000.

Immunohistochemical analysis of paraffin-embedded Human Breast Carcinoma using Histone H3 (Acetyl Lys36) (TDY261) Rabbit pAb diluted at 1:500.