

Histone H2B(Tri Methyl Lys43) Rabbit Polyclonal Antibody

Catalog TDY260C TDY260F

Tel: 010-82908854

Quantity 50μL 100μL

Free: 400-0620-621

Web: www.tdybio.com

For research use only.

Applications	Species Cross-Reactivity	Molecular Weight	Isotype
WB, IHC	H, R, M	14KD	IgG

Storage Buffer & Condition: **Rabbit Antiserum**, containing 0.02% **sodium azide** as Preservative and 50% Glycerol.

Store at **-20°C**. **Do not aliquot the antibody.**

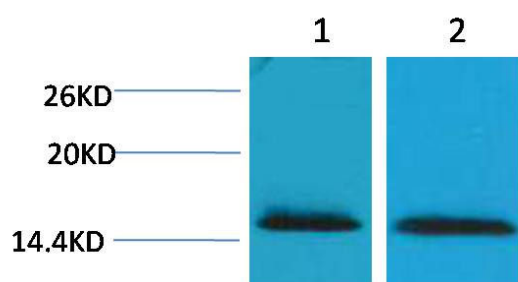
Recommended dilutions: WB: 1:500-1,000 IHC: 1:200-500

Optimal dilutions should be determined by the end user.

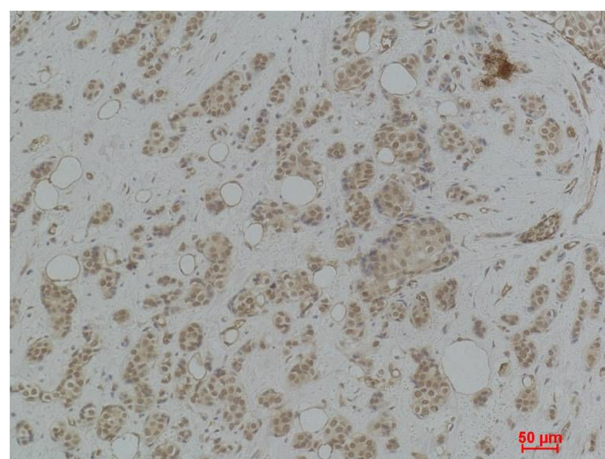
Specificity: The Histone H2B(Tri Methyl Lys43) Rabbit Polyclonal Antibody can detects endogenous Histone H2B (Tri Methyl Lys43) protein.

Alternative Names: H2B GL105 antibody, H2B.1 antibody, Histone H2B type 1B antibody, HIST1H2BB antibody

Background: Histone H2B is one of the 5 main histone proteins involved in the structure of chromatin in eukaryotic cells.



Western blot analysis of 1) HeLa, 2) 3T3 with Histone H2B(Tri Methyl Lys43) Rabbit pAbTDY260 diluted at 1:2,000.



Immunohistochemical analysis of paraffin-embedded Human Breast Carcinoma using Histone H2B(Tri Methyl Lys43) (TDY260) Rabbit pAb diluted at 1:500.