

AFP/alpha 1 Fetoprotein Mouse Monoclonal Antibody(17C5)

Catalog	TDY100C	TDY100F
Quantity	50 μ L	100 μ L

Tel: 010-82908854
Free: 400-0620-621
Web: www.tdybio.com

For research use only.

Applications	Species Cross-Reactivity	Molecular Weight	Isotype
WB, IHC	H	70KD	IgG1

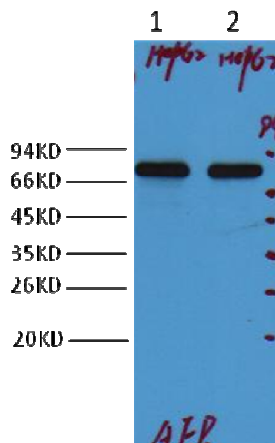
Storage Buffer & Condition: PBS, pH 7.4, containing 0.02% **sodium azide** as Preservative and 50% Glycerol.
Store at **-20°C**. **Do not aliquot the antibody.**

Recommended dilutions: WB: 1:2,000 IHC: 1:200-500

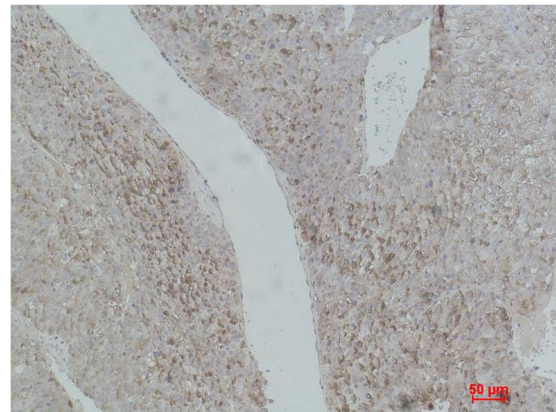
Optimal dilutions should be determined by the end user.

Specificity: AFP Mouse Monoclonal antibody detects endogenous AFP proteins.

Background: alpha-1-fetoprotein (AFP) is a protein that in humans is encoded by the *AFP* gene. The *AFP* gene is located on the q arm of chromosome 4 (4q25). AFP is a major plasma protein produced by the yolk sac and the liver during fetal development that is thought to be the fetal form of serum albumin. AFP binds to copper, nickel, fatty acids and bilirubin and is found in monomeric, dimeric and trimeric forms.



Western blot analysis of HepG2, with AFP Mouse mAb diluted at 1:2,000.



Immunohistochemical analysis of paraffin-embedded Human Hepatocarcinoma using AFP (TDY100) Mouse mAb diluted at 1:500.