

## Histone H2B(Di Methyl Lys43) Rabbit Polyclonal Antibody

Catalog TDY259C TDY259F

Tel: 010-82908854

Quantity 50 $\mu$ L 100 $\mu$ L

Free: 400-0620-621

Web: www.tdybio.com

**For research use only.**

| Applications | Species Cross-Reactivity | Molecular Weight | Isotype |
|--------------|--------------------------|------------------|---------|
| WB, IHC      | H, R, M                  | 14KD             | IgG     |

**Storage Buffer & Condition:** **Rabbit Antiserum**, containing 0.02% **sodium azide** as Preservative and 50% Glycerol.

Store at **-20°C**. **Do not aliquot the antibody.**

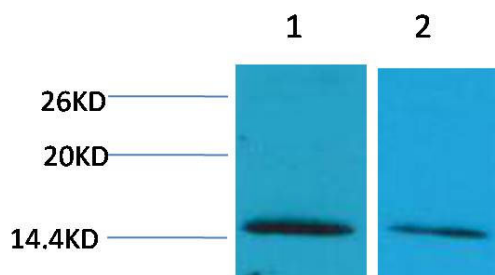
**Recommended dilutions:** WB: 1:500-1,000 IHC: 1:100-200

**Optimal dilutions should be determined by the end user.**

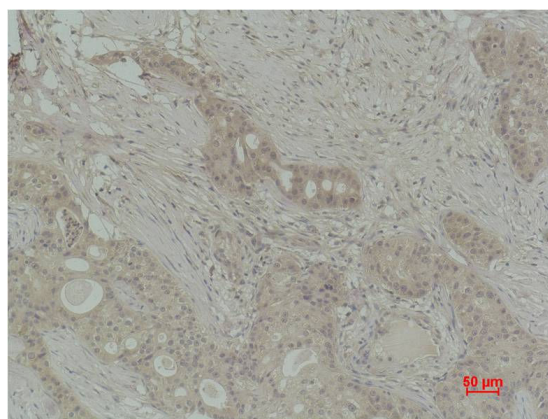
**Specificity:** The Histone H2B(Di Methyl Lys43) Rabbit Polyclonal Antibody can detect endogenous Histone H2B (Di Methyl Lys43) protein.

**Alternative Names:** H2B GL105 antibody, H2B.1 antibody, Histone H2B type 1B antibody, HIST1H2BB antibody

**Background:** Histone H2B is one of the 5 main histone proteins involved in the structure of chromatin in eukaryotic cells.



Western blot analysis of 1) HeLa, 2) 3T3 with Histone H2B(Di Methyl Lys43) Rabbit pAbTDY259 diluted at 1:2,000.



Immunohistochemical analysis of paraffin-embedded Human Breast Carcinoma using Histone H2B(Di Methyl Lys43) (TDY259) Rabbit pAb diluted at 1:200.