

Histone H2B(Di Methyl Lys5) Rabbit Polyclonal Antibody

| | | |
|----------|------------|-------------|
| Catalog | TDY258C | TDY258F |
| Quantity | 50 μ L | 100 μ L |

Tel: 010-82908854
Free: 400-0620-621
Web: www.tdybio.com

For research use only.

| Applications | Species Cross-Reactivity | Molecular Weight | Isotype |
|--------------|--------------------------|------------------|---------|
| WB, IHC | H, R, M | 14KD | IgG |

Storage Buffer & Condition: **Rabbit Antiserum**, containing 0.02% **sodium azide** as Preservative and 50% Glycerol.

Store at **-20°C**. **Do not aliquot the antibody.**

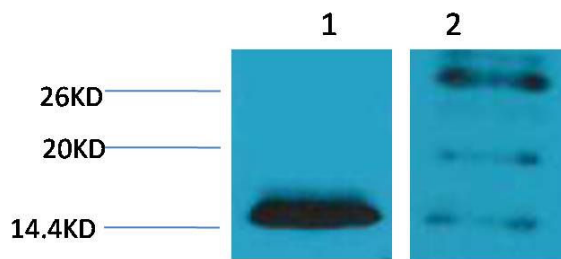
Recommended dilutions: WB: 1:500-1,000 IHC: 1:100-200

Optimal dilutions should be determined by the end user.

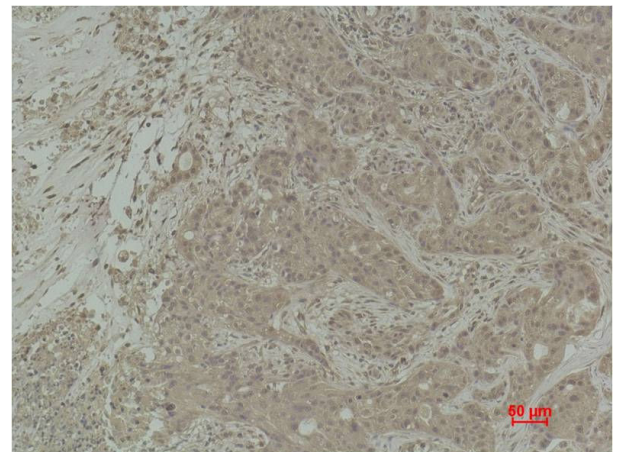
Specificity: The Histone H2B(Di Methyl Lys5) Rabbit Polyclonal Antibody can detect endogenous Histone H2B (Di Methyl Lys5) protein.

Alternative Names: H2B GL105 antibody, H2B.1 antibody, Histone H2B type 1B antibody, HIST1H2BB antibody

Background: Histone H2B is one of the 5 main histone proteins involved in the structure of chromatin in eukaryotic cells.



Western blot analysis of 1) Hela, 2) 3T3 with Histone H2B(Di Methyl Lys5) Rabbit pAb TDY258 diluted at 1:2,000.



Immunohistochemical analysis of paraffin-embedded Human Breast Carcinoma using Histone H2B(Di Methyl Lys5) (TDY258) Rabbit pAb diluted at 1:200.