

## Histone H1(Mono Methyl Lys25) Rabbit Polyclonal Antibody

Catalog	TDY255C	TDY255F
Quantity	50 $\mu$ L	100 $\mu$ L

Tel: 010-82908854  
Free: 400-0620-621  
Web: www.tdybio.com

**For research use only.**

Applications	Species Cross-Reactivity	Molecular Weight	Isotype
WB, IHC	H, R, M	17-25KD	IgG

**Storage Buffer & Condition:** **Rabbit Antiserum**, containing 0.02% **sodium azide** as Preservative and 50% Glycerol.

Store at **-20°C**. **Do not aliquot the antibody.**

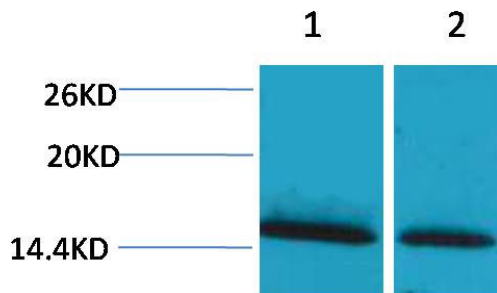
**Recommended dilutions:** WB: 1:500-1,000 IHC: 1:100-200

**Optimal dilutions should be determined by the end user.**

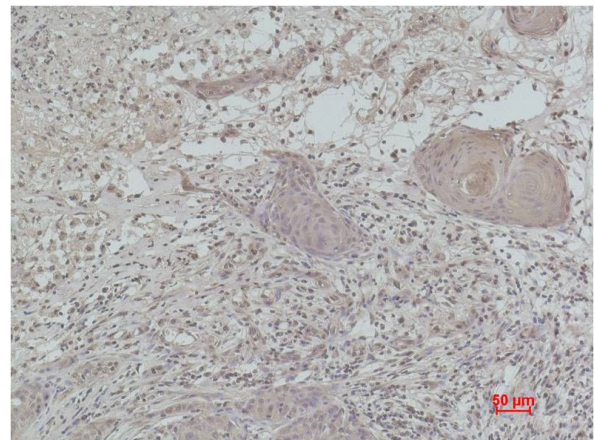
**Specificity:** The Histone H1(Mono Methyl Lys25) Rabbit Polyclonal Antibody can detect endogenous Histone H1(Mono Methyl Lys25) protein.

**Alternative Names:** H1 antibody, HIST1H1B antibody, Histone 1 antibody, Histone H1a antibody

**Background:** Histone H1 is one of the five main histone protein families which are components of chromatin in eukaryotic cells. May play a key role in the control of gene expression during oogenesis and early embryogenesis, presumably through the perturbation of chromatin structure.



Western blot analysis of 1) HeLa, 2) 3T3 with Histone H1(Mono Methyl Lys25) Rabbit pAbTDY255 diluted at 1:2,000.



Immunohistochemical analysis of paraffin-embedded Human Breast Carcinoma using Histone H1(Mono Methyl Lys25) (TDY255) Rabbit pAb diluted at 1:200.