

CD23 Mouse Monoclonal Antibody(10H2)

Catalog	TDY107C	TDY107F
Quantity	50 μ L	100 μ L

Tel: 010-82908854
Free: 400-0620-621
Web: www.tdybio.com

For research use only.

Applications	Species Cross-Reactivity	Molecular Weight	Isotype
WB, IHC	H, R, M	36KD	IgG1

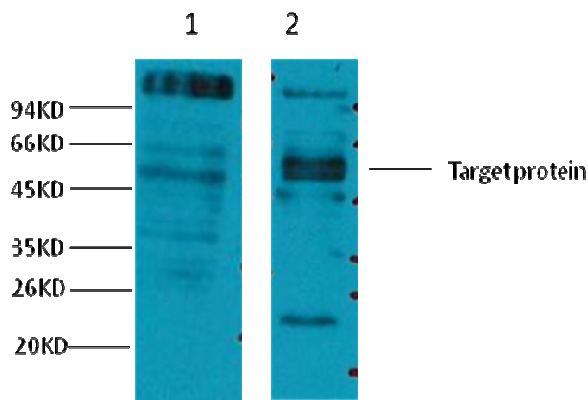
Storage Buffer & Condition: PBS, pH 7.4, containing 0.02% **sodium azide** as Preservative and 50% Glycerol.
Store at **-20°C**. **Do not aliquot the antibody.**

Recommended dilutions: WB: 1:1,000 IHC: 1:200-500

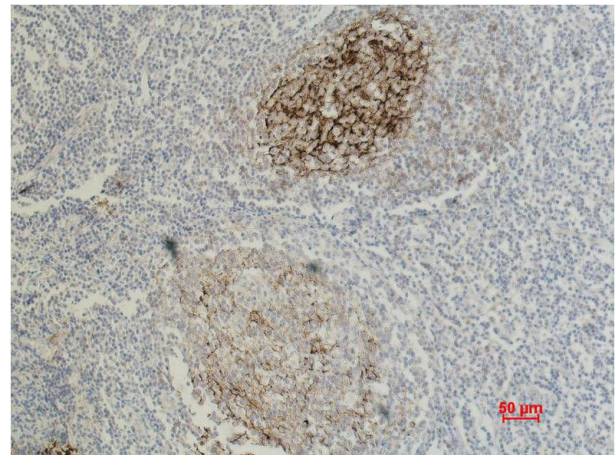
Optimal dilutions should be determined by the end user.

Specificity: CD23 Mouse Monoclonal antibody detects endogenous CD23 proteins.

Background: CD23, also known as Fc epsilon RII, or Fc ϵ RII, is the "low-affinity" receptor for IgE, an antibody isotype involved in allergy and resistance to parasites, and is important in regulation of IgE levels. Unlike many of the antibody receptors, CD23 is a C-type lectin. It is found on mature B cells, activated macrophages, eosinophils, follicular dendritic cells, and platelets.



Western blot analysis of 1) HeLa, 2) Mouse Brain tissue, with CD23 Mouse mAb diluted at 1:2,000.



Immunohistochemical analysis of paraffin-embedded Human Tonsil Carcinoma using CD23 (TDY107) Mouse mAb diluted at 1:500.