

ErbB-2/HER-2 Mouse Monoclonal Antibody(3C9)

Catalog TDY104C TDY104F

Tel: 010-82908854

Quantity 50 μ L 100 μ L

Free: 400-0620-621

Web: www.tdybio.com

For research use only.

Applications	Species	Cross-Reactivity	Molecular Weight	Isotype
WB, IHC		H	138KD	IgG1

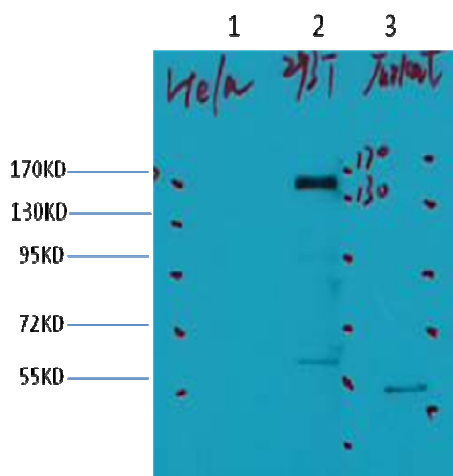
Storage Buffer & Condition: PBS, pH 7.4, containing 0.02% **sodium azide** as Preservative and 50% Glycerol.
Store at **-20°C**. **Do not aliquot the antibody.**

Recommended dilutions: WB: 1:1,000 IHC: 1:200-500

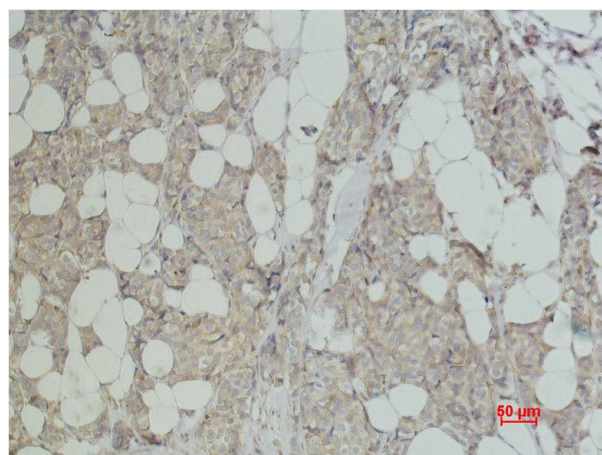
Optimal dilutions should be determined by the end user.

Specificity: ErbB-2 Mouse Monoclonal antibody detects endogenous ErbB-2 proteins.

Background: ErbB 2 is a receptor tyrosine kinase of the ErbB 2 family. It is closely related in structure to the epidermal growth factor receptor. ErbB 2 oncoprotein is detectable in a proportion of breast and other adenocarcinomas, as well as transitional cell carcinomas. In the case of breast cancer, expression determined by immunohistochemistry has been shown to be associated with poor prognosis..



Western blot analysis of 1) HeLa, 2) 293, 3) Jurkat, with ErbB-2 Mouse mAb diluted at 1:2,000.



Immunohistochemical analysis of paraffin-embedded Human Breast Carcinoma using ErbB-2/HER-2 (TDY104) Mouse mAb diluted at 1:500.