

EGFR Mouse Monoclonal Antibody(1B1)

Catalog TDY064C TDY064F

Tel: 010-82908854

Free: 400-0620-621

Quantity 50 μ L 100 μ L

Web: www.tdybio.com

For research use only.

Applications	Species Cross-Reactivity	Molecular Weight	Isotype
WB, IF, IHC	H	~170KD	IgG1

Storage Buffer & Condition: PBS, pH 7.4, containing 0.02% **sodium azide** as Preservative and 50% Glycerol.

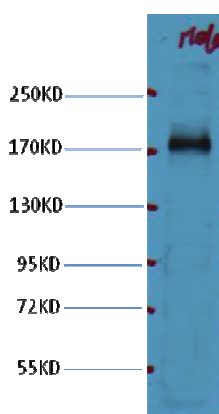
Store at **-20°C**. **Do not aliquot the antibody.**

Recommended dilutions: WB: 1:1,000 IF: 1:100-200 IHC: 1:100-200

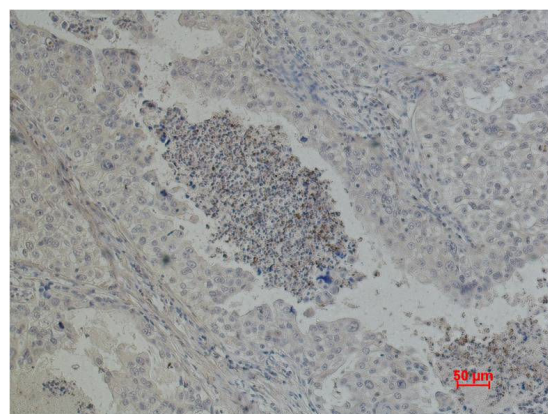
Optimal dilutions should be determined by the end user.

Specificity: The EGFR Mouse Monoclonal antibody detects endogenous EGFR proteins.

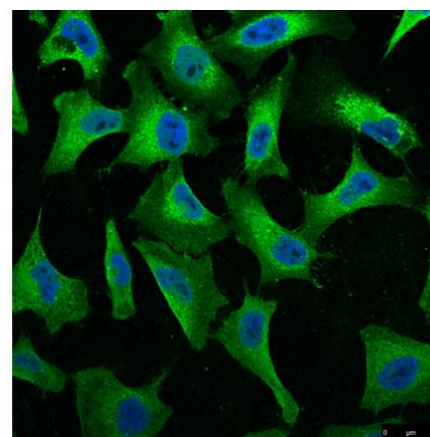
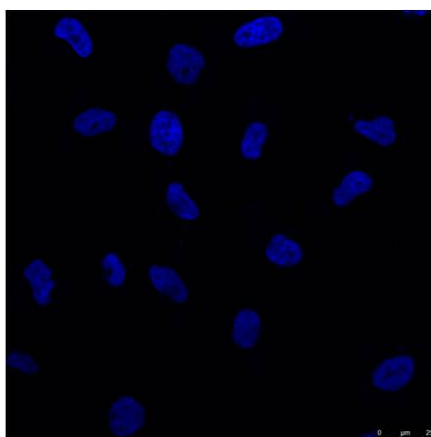
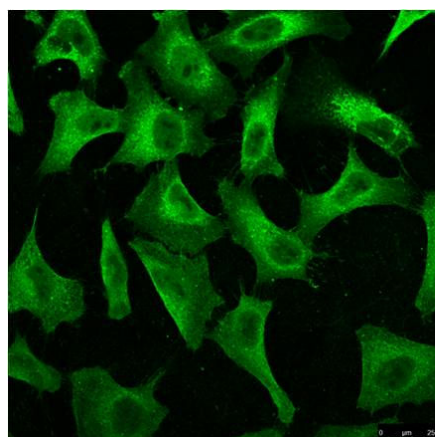
Background: The epidermal growth factor receptor (EGFR; ErbB-1; HER1 in humans) is the cell-surface receptor for members of the epidermal growth factor family (EGF-family) of extracellular protein ligands. Known ligands include EGF, TGFA/TGF- α , amphiregulin, epigen/EPGN, BTC/betacellulin, epiregulin/EREG and HBEGF/heparin-binding EGF. Ligand binding triggers receptor homo- and/or heterodimerization and autophosphorylation on key cytoplasmic residues. The phosphorylated receptor recruits adapter proteins like GRB2 which in turn activates complex downstream signaling cascades.



Western blot analysis of HeLa with EGFR mAb diluted at 1:1,000.



Immunohistochemical analysis of paraffin-embedded Human Lung carcinoma using EGFR (TDY064) Mouse mAb diluted at 1:500.



IF analysis of HeLa with TDY064(Left) and DAPI (Right) diluted at 1:100.

Applications: WB-Western blot IHC-Immunohistochemistry IF-Immunofluorescence IP-Immunoprecipitation ChIP-Chromatin Immunoprecipitation
Reactivity: H-Human R-Rat M-Mouse Mk-Monkey Dg-Dog Ch-Chicken Hm-Hamster Rb-Rabbit Sh-Sheep Pg-Pig