

SLUG Rabbit Polyclonal Antibody(TDY201)

Catalog TDY347C TDY347F

Tel: 010-82908854

Web: www.tdybio.com

Quantity 50μL 100μL

Entrez-Gene ID:6591 , Swiss-Prot Acc.O43623

For research use only.

| Applications | Species Cross-Reactivity | Molecular Weight | Isotype |
|--------------|--------------------------|------------------|---------|
| WB, IHC | H, R, M | 30KD | IgG |

Storage Buffer & Condition: Affinity Purified IgG, PBS, pH 7.4, containing 0.02% **sodium azide** as Preservative and 50% Glycerol.

Store at **-20°C**. **Do not aliquot the antibody.**

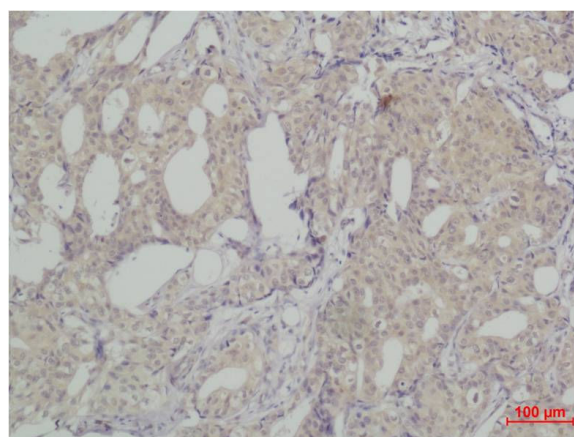
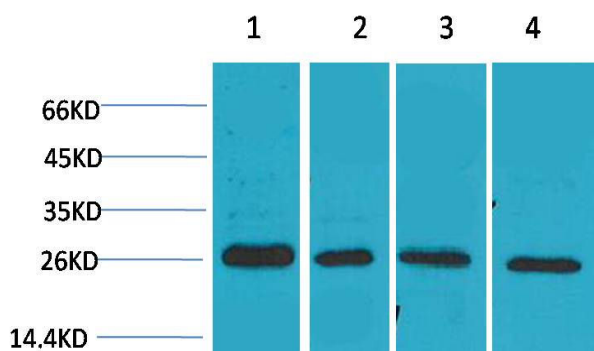
Recommended dilutions: WB: 1:500-1,000 IHC: 1:200-500

Optimal dilutions should be determined by the end user.

Specificity: Antibody can detects endogenous SLUG protein.

Alternative Names: MGC10182 antibody, SLUGH1 antibody, SNAI2 antibody, Zinc finger protein SLUG antibody, WS2D antibody

Background: Transcriptional repressor. Involved in the generation and migration of neural crest cells.



Western blot analysis of 1) MCF7, 2) Mouse Heart Tissue, 3) Rat Heart Tissue, 4) Rat Brain Tissue with SLUG Rabbit pAb TDY347 diluted at 1:2,000.

Immunohistochemical analysis of paraffin-embedded human Breast carcinoma using SLUG (TDY347) Rabbit pAb diluted at 1:500.