

β II tubulin Rabbit Polyclonal Antibody

Catalog TDY212C TDY212F

Tel: 010-82908854

Quantity 50μL 100μL

Free: 400-0620-621

Web: www.tdybio.com

For research use only.

Applications	Species Cross-Reactivity	Molecular Weight	Isotype
WB, IHC	H, R, M	~50KD	IgG

Storage Buffer & Condition: PBS, pH 7.4, containing 0.02% **sodium azide** as Preservative and 50% Glycerol.

Store at **-20°C**. **Do not aliquot the antibody.**

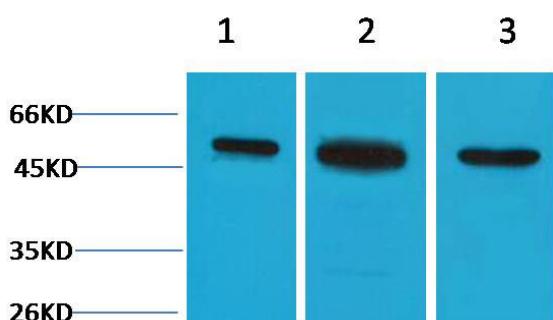
Recommended dilutions: WB: 1:2,000-5,000 IHC: 1:500-1,000

Optimal dilutions should be determined by the end user.

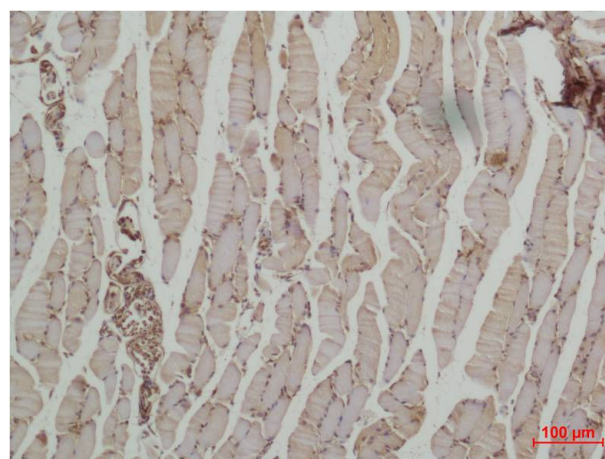
Specificity: The β II tubulin Mouse Monoclonal Antibody can detects endogenous β II tubulin protein.

Alternative Names: class II beta tubulin isotype antibody, TUBB 2 antibody, Tubulin beta 2 antibody

Background: Tubulin is the major constituent of microtubules. It exists as a heterodimer consisting of an alpha and a beta subunit. Class II beta tubulin is the major form of tubulin beta in neurons, although it is not neuronal specific. It is found in many other tissues including lung tissue and Schwann cells.



Western blot analysis of 1) Hela, 2) 3T3, 3) Rat Kidney tissue with TDY212 diluted at 1:3,000.



Immunohistochemical analysis of paraffin-embedded Mouse Skeletal Muscle Tissue using β II Tubulin (TDY212) Rabbit pAb diluted at 1:500.