

## α Skeletal Muscle Actin Mouse Monoclonal Antibody(4B11)

Catalog	TDY189C	TDY189F
Quantity	50μL	100μL

Tel: 010-82908854  
Free: 400-0620-621  
Web: www.tdybio.com

**For research use only.**

Applications	Species Cross-Reactivity	Molecular Weight	Isotype
WB, IP, IHC	H, R, M	~42KD	IgG1

**Storage Buffer & Condition:** PBS, pH 7.4, containing 0.02% **sodium azide** as Preservative and 50% Glycerol.  
Store at **-20°C. Do not aliquot the antibody.**

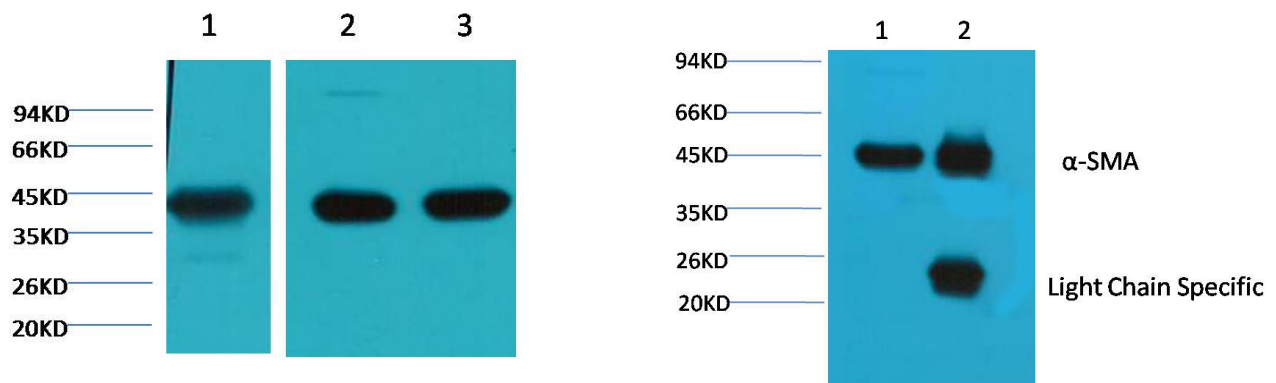
**Recommended dilutions:** WB: 1:5,000-10,000 IP:1:200 IHC: 1:200-500

**Optimal dilutions should be determined by the end user.**

**Specificity:** Antibody can detect endogenous α Skeletal Muscle Actin protein.

**Alternative Names:** ACTA antibody, ACTA1 antibody, ACTC antibody, ACTC1 antibody, Actin alpha cardiac muscle antibody, ACTS antibody, Alpha actin 1 antibody, Cardiac muscle alpha actin 1 antibody, Skeletal muscle alpha actin 1 antibody

**Background:** Actin, alpha skeletal muscle is a protein that in humans is encoded by the *ACTA1* gene. Actin alpha 1 which is expressed in skeletal muscle is one of six different actin isoforms which have been identified. Actins are highly conserved proteins that are involved in cell motility, structure and integrity. Alpha actins are a major constituent of the contractile apparatus.



Western blot analysis of 1) HeLa, 2) Mouse Brain tissue, 3) Rat Brain tissue with TDY189 diluted at 1:20,000.

1. Input: Mouse Brain Tissue Lysate

2. IP product: IP dilute 1:200

Western blot analysis: primary antibody : TDY189 1:10,000

Secondary antibody: Goat anti-Mouse IgG, Light chain specific (S003), 1:5,000

Immunohistochemical analysis of paraffin-embedded Mouse Skeletal Muscle Tissue using α skeletal muscle actin (TDY189) Mouse mAb diluted at 1:500.

