

## CD25 Mouse Monoclonal Antibody(Q22)

Catalog	TDY134C	TDY134F
Quantity	50 $\mu$ L	100 $\mu$ L

Tel: 010-82908854  
Free: 400-0620-621  
Web: www.tdybio.com

**For research use only.**

Applications	Species Cross-Reactivity	Molecular Weight	Isotype
IHC	H	N/A	IgG1

**Storage Buffer & Condition:** PBS, pH 7.4, containing 0.02% **sodium azide** as Preservative and 50% Glycerol.  
Store at **-20°C**. **Do not aliquot the antibody.**

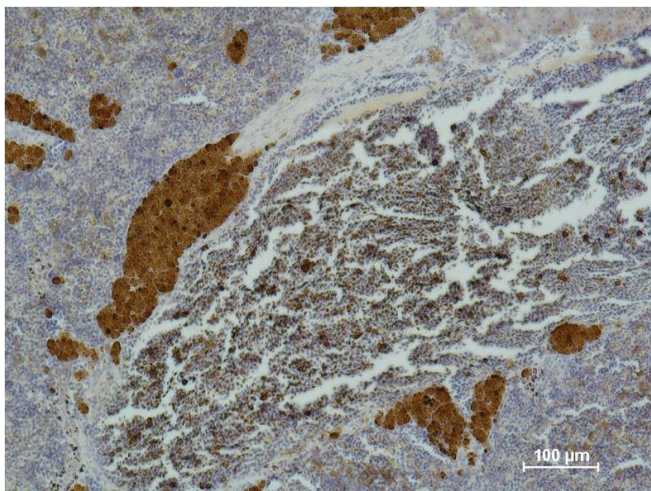
**Recommended dilutions:** IHC: 1:200-500

**Optimal dilutions should be determined by the end user.**

**Specificity:** Antibody can detect endogenous human CD25 protein.

**Alternative Names:** IL2 receptor alpha, Interleukin 2 receptor alpha chain, IL 2RA, Ly43, p55, TCGFR

**Background:** CD25 is the alpha chain of the IL-2 receptor. It is a type I transmembrane protein present on activated T cells, activated B cells.



Immunohistochemical analysis of paraffin-embedded Mouse Spleen Tissue using CD 25 (TDY134) Mouse mAb diluted at 1:500.