

## GAP43 Rabbit Polyclonal Antibody

|          |            |             |
|----------|------------|-------------|
| Catalog  | TDY215C    | TDY215F     |
| Quantity | 50 $\mu$ L | 100 $\mu$ L |

Tel: 010-82908854  
Free: 400-0620-621  
Web: www.tdybio.com

**For research use only.**

| Applications | Species Cross-Reactivity | Molecular Weight | Isotype |
|--------------|--------------------------|------------------|---------|
| WB, IHC      | H, R, M                  | 38,43KD          | IgG     |

**Storage Buffer & Condition:** PBS, pH 7.4, containing 0.02% **sodium azide** as Preservative and 50% Glycerol.  
Store at **-20°C. Do not aliquot the antibody.**

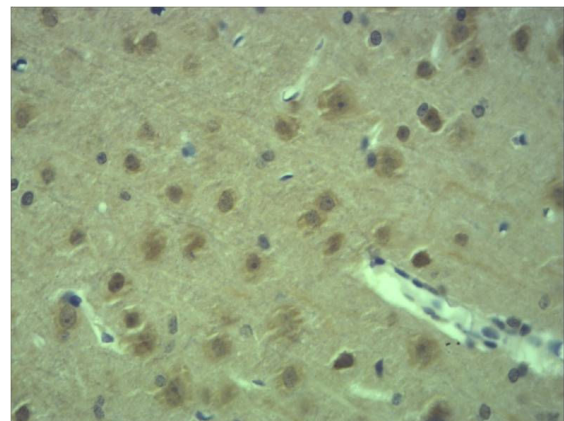
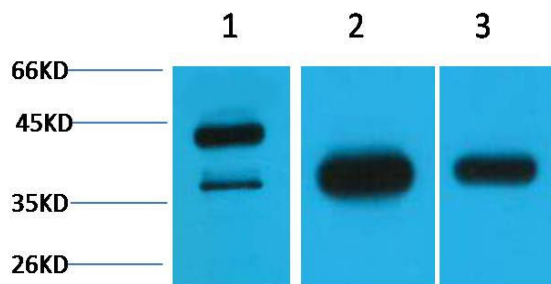
**Recommended dilutions:** WB: 1:1,000-3,000 IHC: 1:500-1,000

**Optimal dilutions should be determined by the end user.**

**Specificity:** The GAP43 antibody can detect endogenous GAP43 protein.

**Alternative Names:** B50 antibody, Growth Associated Protein 43 antibody, Nerve Growth Related Peptide antibody

**Background:** **Growth Associated Protein 43** also known as **GAP43** is a protein that in humans is encoded by the *GAP43* gene. GAP43, is a nervous tissue-specific cytoplasmic protein that can be attached to the membrane via a dual palmitoylation sequence on cysteines 3 and 4. This sequence targets GAP43 to lipid rafts.



Western blot analysis of 1) HeLa, 2) Mouse Brain, 3) Rat Brain tissue with TDY215 diluted at 1:3,000.

Immunohistochemical analysis of paraffin-embedded Mouse Brain Tissue using  $\alpha$ -Smooth Muscle Actin (TDY215) Rabbit pAb diluted at 1:500.