

GFP Mouse Monoclonal Antibody(Plant Specific)

| | | | |
|----------|------------|-------------|---------------------|
| Catalog | TDY156C | TDY156F | Tel: 010-82908854 |
| Quantity | 50 μ L | 100 μ L | Free: 400-0620-621 |
| | | | Web: www.tdybio.com |

For research use only.

| Applications | Species Cross-Reactivity | Molecular Weight | Isotype |
|--------------|--------------------------|------------------|---------|
| WB, IP | N/A | N/A | IgG1 |

Storage Buffer & Condition: PBS, pH 7.4, containing 0.02% **sodium azide** as Preservative and 50% Glycerol.
Store at **-20°C**. **Do not aliquot the antibody.**

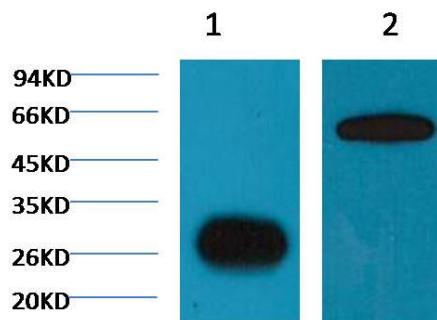
Recommended dilutions: WB: 1:5,000 IP: 1:200

Optimal dilutions should be determined by the end user.

Specificity: The GFP tag antibody can recognize GFP,EGFP and GFP, EGFP tag fusion proteins in Plants.

Alternative Names: Green fluorescent protein

Background: The **green fluorescent protein (GFP)** is a protein composed of 238 amino acid residues (26.9kDa) that exhibits bright green fluorescence when exposed to light in the blue to ultraviolet range. In cell and molecular biology, the GFP gene is frequently used as a reporter of expression.



Western blot analysis of GFP transfected Plants with TDY156 diluted at 1:5,000

- 1) GFP Mock (control)
- 2) GFP+ target protein